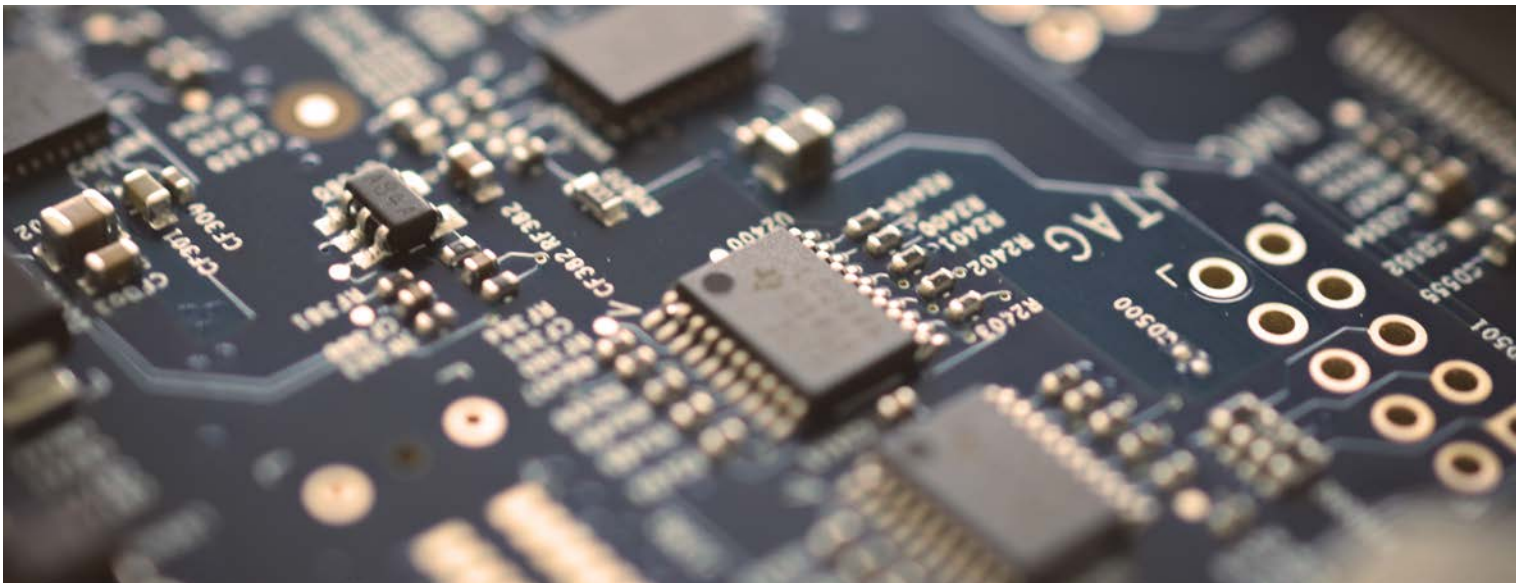


# Direct Exchange. Connecting large- scale IT systems.



## Solution for individual needs

### Key points in brief

Direct Exchange is the electronic interface for connecting large systems to the Credit Suisse payment transaction infrastructure. Clients do not log on to Direct Exchange. Instead, they simply send the desired files to the bank or retrieve them via the same channel. Credit Suisse checks the client authorization on the basis of the agreed rights and executes the orders.

### Scope of services

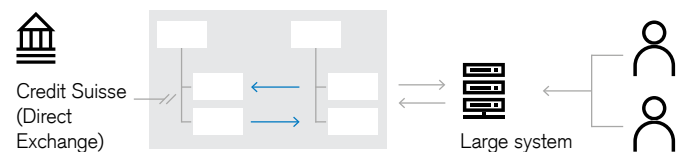
Direct Exchange enables you to access numerous banking services. The list below provides an overview of the scope of services:

- pain.001 (Swiss standard) payment orders
- pain.002 (Swiss standard) error/status reports
- pain.008 (Swiss standard) LSV+ direct debit orders
- V11 – BESR credits
- MT940 – Account statement
- MT942 – Intraday account statement

- PDF – Electronic documents
- camt.05X – ISO 20022 account statement formats

### Communication

The flexibility required for large systems is achieved by employing an SFTP connection to encrypt communication. Clients can select either a certificate-based login or one based on a user name/password.



---

## Your contacts

If you have any questions regarding the electronic banking products and payment transaction solutions offered by Credit Suisse (Switzerland) Ltd., our specialists from the Electronic Banking Desk will be happy to help:

From Switzerland, call 0800 80 87 50\* free of charge

From abroad, call +41 800 80 87 50\*

Mon.–Fri., 8 a.m.–5 p.m.

Email: [eb.desk@credit-suisse.com](mailto:eb.desk@credit-suisse.com)

\* Please note that telephone calls to our numbers may be recorded. We assume that by calling us, you accept this business practice.

## **CREDIT SUISSE (Switzerland) Ltd.**

P.O. Box 100

CH-8070 Zurich

[credit-suisse.com/cashmanagement](https://www.credit-suisse.com/cashmanagement)

The information provided herein constitutes marketing material. It is not investment advice or otherwise based on a consideration of the personal circumstances of the addressee nor is it the result of objective or independent research. The information provided herein is not legally binding and it does not constitute an offer or invitation to enter into any type of financial transaction. The information provided herein was produced by Credit Suisse Group AG and/or its affiliates (hereafter "CS") with the greatest of care and to the best of its knowledge and belief. The information and views expressed herein are those of CS at the time of writing and are subject to change at any time without notice. They are derived from sources believed to be reliable. CS provides no guarantee with regard to the content and completeness of the information and where legally possible does not accept any liability for losses that might arise from making use of the information. If nothing is indicated to the contrary, all figures are unaudited. The information provided herein is for the exclusive use of the recipient. Neither this information nor any copy thereof may be sent, taken into or distributed in the United States or to any U. S. person (within the meaning of Regulation S under the US Securities Act of 1933, as amended). It may not be reproduced, neither in part nor in full, without the written permission of CS.

Copyright © 2020 Credit Suisse Group AG and/or its affiliates. All rights reserved.