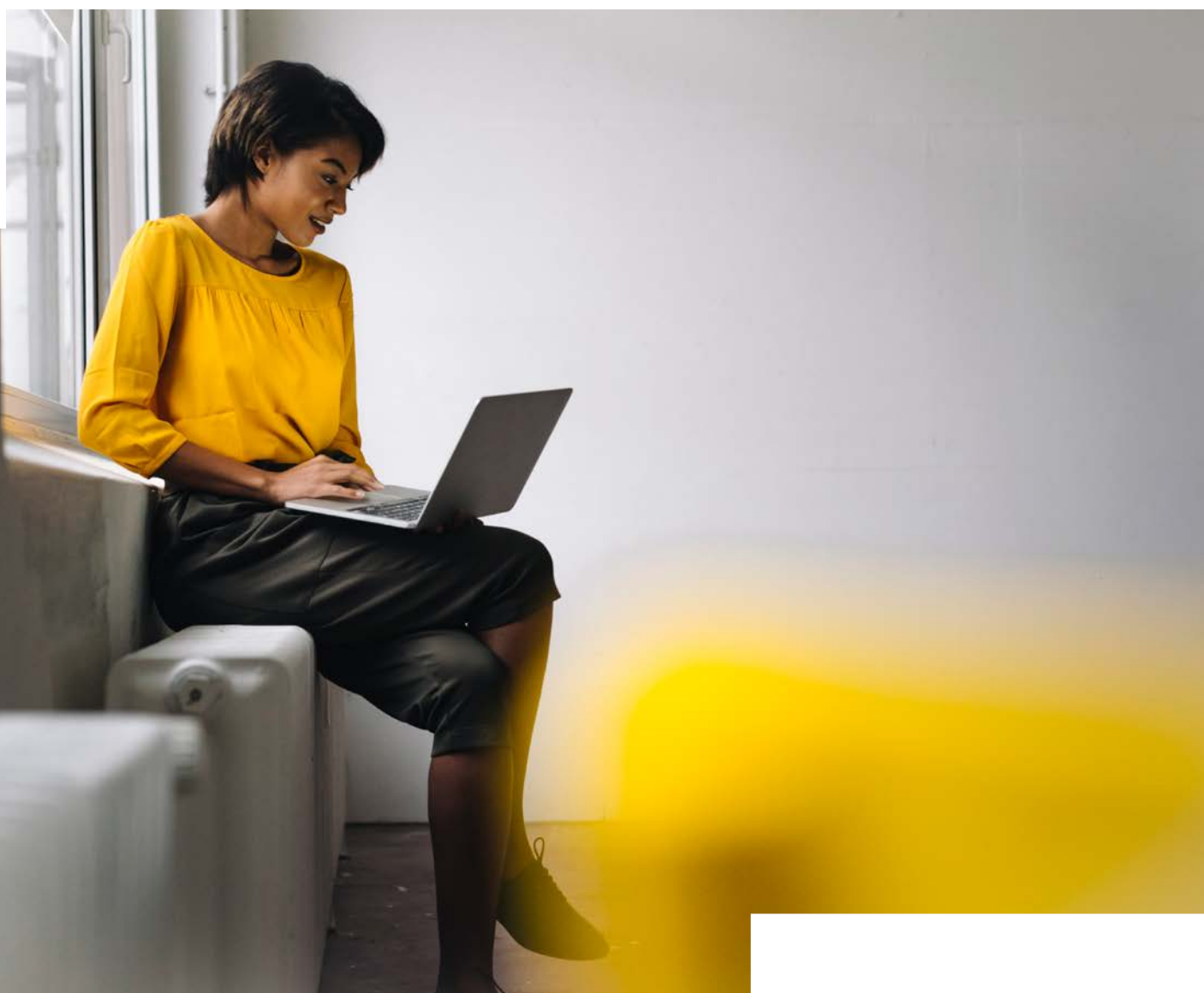


Private swift Network (PsN)



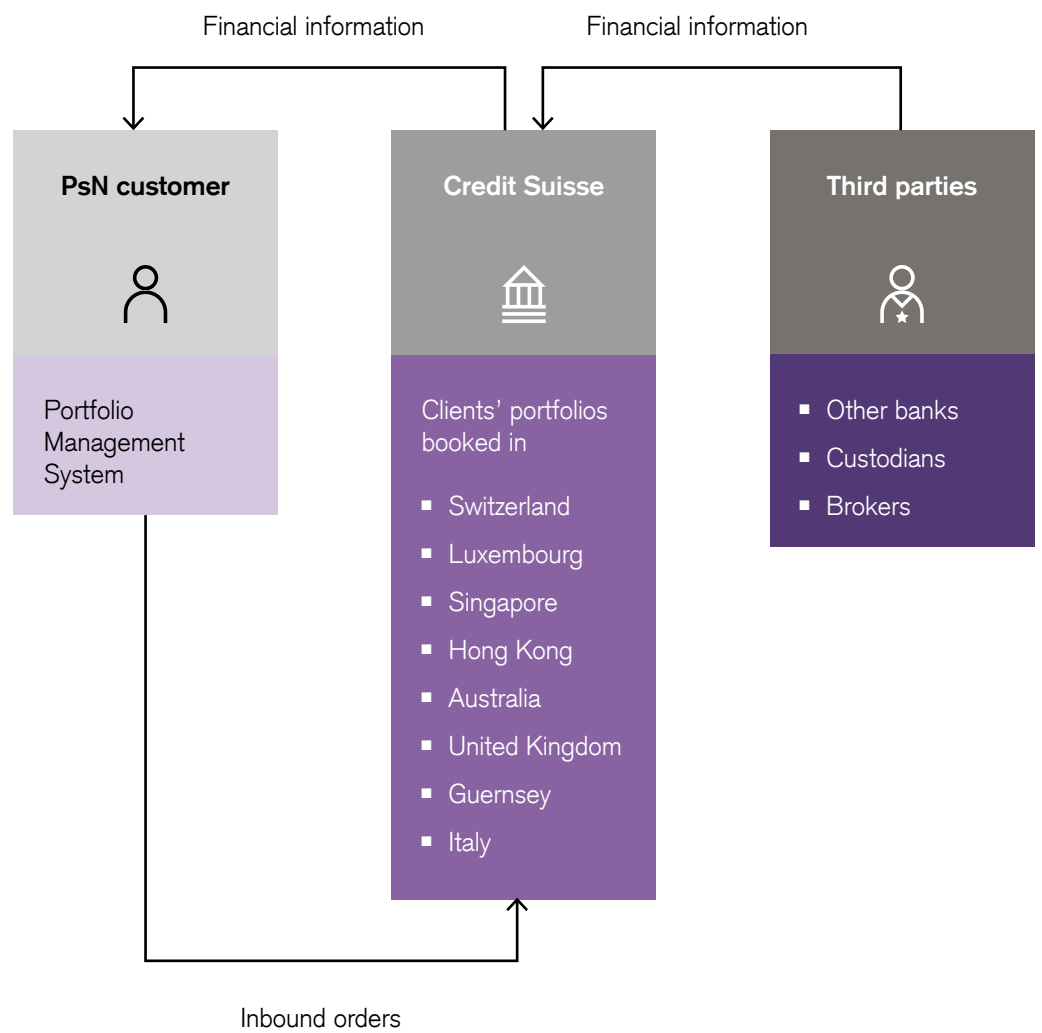
Private swift Network (PsN) software solution

Key advantages

- Typical PsN customers are financial professionals: asset managers and financial advisors, family offices, institutional and corporate clients; or their service providers (Software as a Service SaaS; clouds; etc.)
- PsN transfers digital financial data from and about Credit Suisse clients' portfolios to the financial professionals. This enables the latter to efficiently feed their portfolio management system (PMS) automatically by selecting the most adequate of all PsN options
- PsN provides digital end-of-day statements of positions and contracts, and intraday information and confirmations of financial transactions
- PsN enables the financial professionals to send inbound orders to Credit Suisse such as securities trade orders, bulk orders, securities settlement instructions and requests for payment transfer
- PsN messages are based on SWIFT standard format allowing for efficient data integration into external portfolio management systems
- Costs are variable and dependent on the individual portfolio management system setup of the PsN data receiver
- Additional true-Advice product suite features provided by Keyon AG are optional and can be licensed individually

Solution description

Service offering



Available data

- Securities, cash and metal accounts position reports
- Treasury market transactions and positions resp. contract information about money market, foreign exchange forwards, options and Over-The-Counter (OTC) as well as precious metal trade and metal option confirmations
- Securities trade orders, status and confirmations, corporate actions, settlement instructions and confirmations, and securities statements of transactions
- Cash and metal account movements and statements
- Master data i.e. client and account master data, closing data, portfolio composition and performance, financial instruments market data, foreign exchange rates

Transfer options

- **Email** transfer via email in encrypted attachments
- **EBICS and SFTP** transfer via EBICS or SFTP-client/server
- **true-Broker** Highly secure transfer via internet/VPN; PsN-client with hardware security on PsN-customer's side

Transfer options	Data format options		
	PsN-Light	PsN-Full	PsN true-Advice
Email	☑	☒	☒
EBICS	☑	☑	☒
SFTP	☑	☑	☒
True-Broker	☒	☑	☑

Data format options

PsN-Light

- Csv format for an easy upload i.e. into a PMS or Excel
- 1 batch transfer per day, but no intraday information

PsN-Full

- International SWIFT message format
- Near real-time transfer of financial transaction information
- Inbound orders, i.e. trades, payment and settlements

PsN true-Advice is based on PsN-Full true-Broker and offers additional optional features, i.e.

- Excel and MIFID2 reports, csv format like PsN-Light
- Bloomberg/PORT<GO>
- Inbound trade orders with FIX or MT502 format
- Facilitates settlement instructions

Offering/CS value proposition/Costs

- Portfolio information from all portfolio-relevant banking transactions – not only cash management, but also foreign exchange, currency options, money market, securities transactions and corporate actions, etc. – from booked accounts in all bigger Credit Suisse subsidiaries, gives a holistic asset overview of segregated accounts
- Near real-time financial transaction information and asset overview enables a near real-time asset and risk management for the PsN customer – and its clients
- PsN's SWIFT format is a de-facto standard supported by many portfolio management system providers and hence lowers costs and time for integration on the PsN-customer's side
- PsN digital data feed from Credit Suisse complements the information requirements of PsN customers who run a multibanking setup
- Near real-time and bi-directional communication architecture allows straight-through processing (STP) via a secure internet connection
- Integration of PsN data feed into external portfolio management system may result in additional costs that may vary depending on the individual portfolio management system setup of the PsN data receiver
- Optionally, the customer can license single features of the true-Advice product suite provided by Keyon AG which are charged individually. For more information please consult the Keyon fact sheet or contact PsN Product Management

**Target segments/
Limitations**

- External asset managers, fiduciaries and custodians
- Single and multi family offices
- Financial service providers for clients with accounts booked in Credit Suisse
- Institutional and corporate clients
- For banks and big corporates it is preferable to establish a SWIFT connection with transfer over SWIFT, but there are exceptions where such clients explicitly prefer PsN





CREDIT SUISSE (SWITZERLAND) LTD.
credit-suisse.com

The information provided herein constitutes marketing material. It is not investment advice or otherwise based on a consideration of the personal circumstances of the addressee nor is it the result of objective or independent research. The information provided herein is not legally binding and it does not constitute an offer or invitation to enter into any type of financial transaction. The information provided herein was produced by Credit Suisse Group AG and/or its affiliates (hereafter "CS") with the greatest of care and to the best of its knowledge and belief. The information and views expressed herein are those of CS at the time of writing and are subject to change at any time without notice. They are derived from sources believed to be reliable. CS provides no guarantee with regard to the content and completeness of the information and where legally possible does not accept any liability for losses that might arise from making use of the information. If nothing is indicated to the contrary, all figures are unaudited. The information provided herein is for the exclusive use of the recipient. Neither this information nor any copy thereof may be sent, taken into or distributed in the United States or to any U. S. person (within the meaning of Regulation S under the US Securities Act of 1933, as amended). It may not be reproduced, neither in part nor in full, without the written permission of CS.

Copyright © 2021 Credit Suisse Group AG and/or its affiliates. All rights reserved.