



Credit Suisse Global Healthcare Conference 2022

Teresa Graham |

Head of Global Product Strategy

Bruno Eschli |

Head of Investor relations

This presentation contains certain forward-looking statements. These forward-looking statements may be identified by words such as ‘believes’, ‘expects’, ‘anticipates’, ‘projects’, ‘intends’, ‘should’, ‘seeks’, ‘estimates’, ‘future’ or similar expressions or by discussion of, among other things, strategy, goals, plans or intentions. Various factors may cause actual results to differ materially in the future from those reflected in forward-looking statements contained in this presentation, among others:

- 1 pricing and product initiatives of competitors;
- 2 legislative and regulatory developments and economic conditions;
- 3 delay or inability in obtaining regulatory approvals or bringing products to market;
- 4 fluctuations in currency exchange rates and general financial market conditions;
- 5 uncertainties in the discovery, development or marketing of new products or new uses of existing products, including without limitation negative results of clinical trials or research projects, unexpected side-effects of pipeline or marketed products;
- 6 increased government pricing pressures;
- 7 interruptions in production;
- 8 loss of or inability to obtain adequate protection for intellectual property rights;
- 9 litigation;
- 10 loss of key executives or other employees; and
- 11 adverse publicity and news coverage.

Any statements regarding earnings per share growth is not a profit forecast and should not be interpreted to mean that Roche’s earnings or earnings per share for this year or any subsequent period will necessarily match or exceed the historical published earnings or earnings per share of Roche.

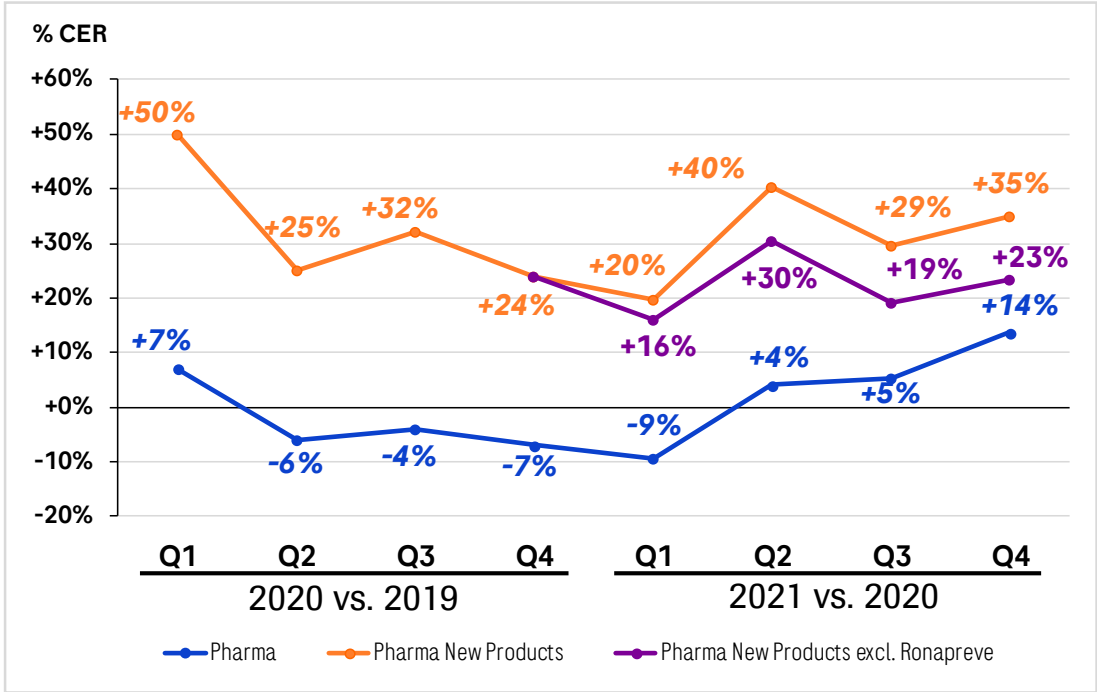
For marketed products discussed in this presentation, please see full prescribing information on our website www.roche.com

All mentioned trademarks are legally protected.

Strong underlying business performance for both divisions

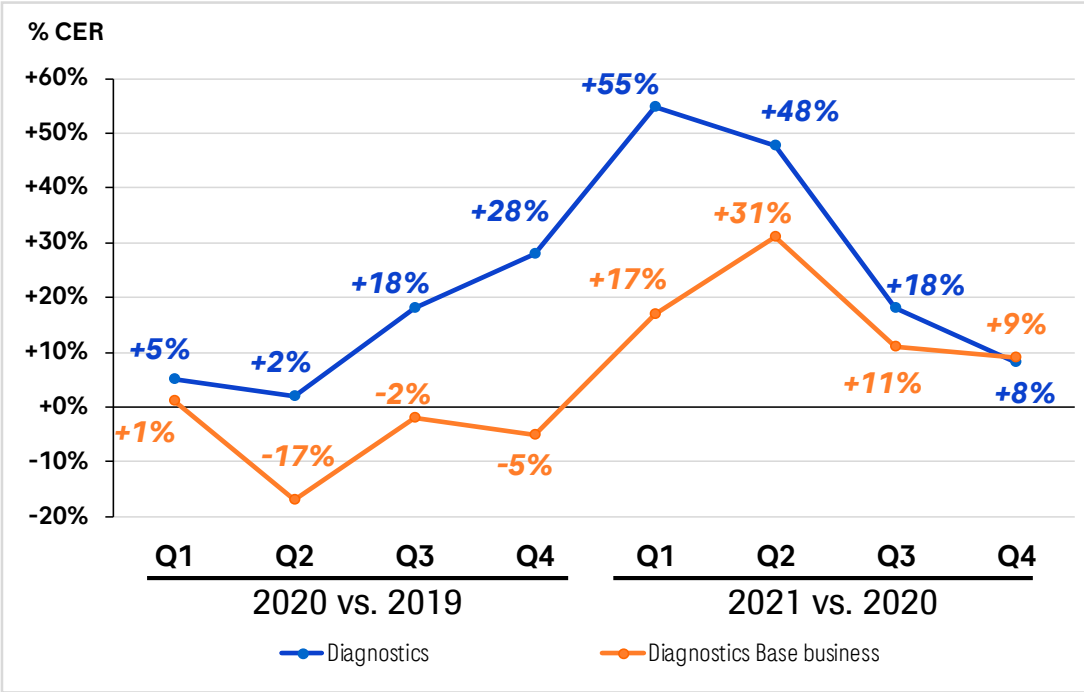
Pharma

Quarterly sales evolution 2020-2021



Diagnostics

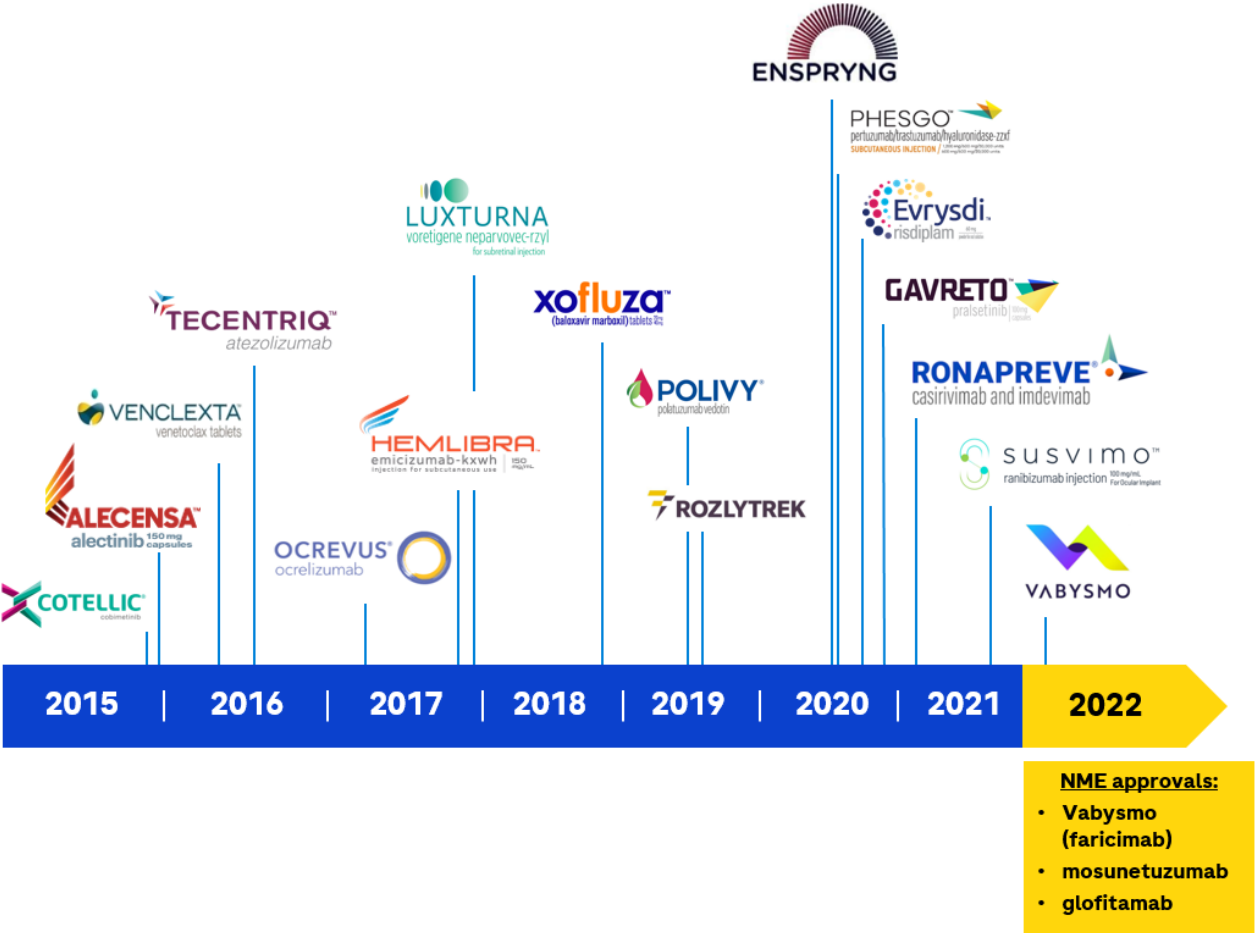
Quarterly sales evolution 2020-2021



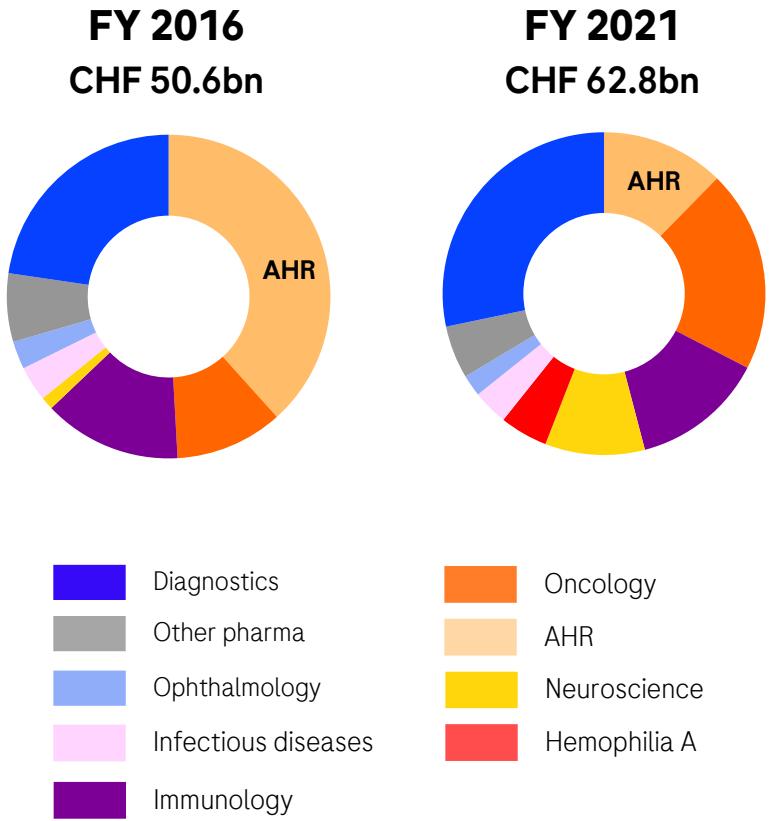
Growth rates at CER (Constant exchange Rates)

Strong portfolio rejuvenation and diversification

3 NME launches expected in 2022



Diversification of Roche sales



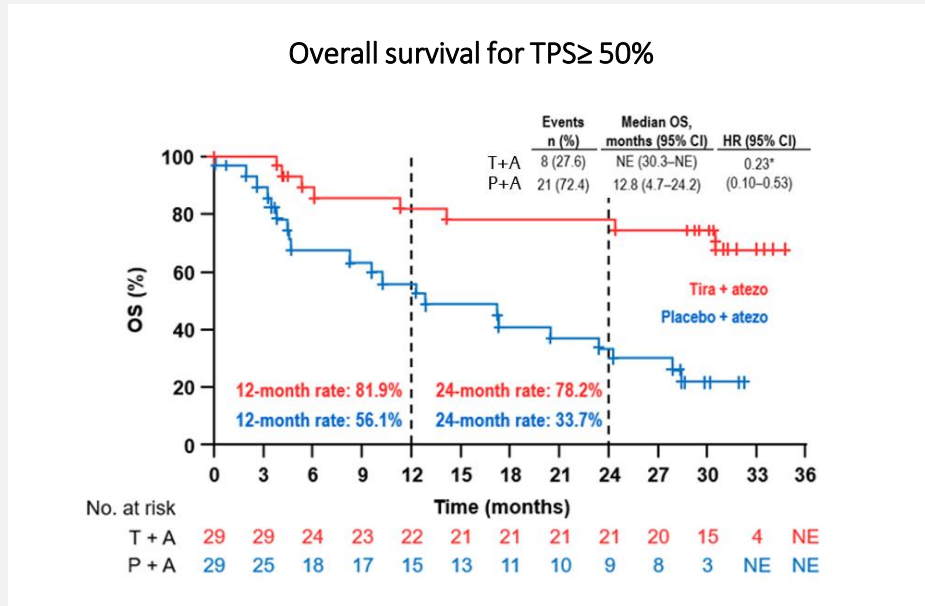
AHR=Avastin, Herceptin, Rituxan/MabThera; NME=new molecular entity

Tiragolumab with 9 pivotal trials initiated, 4 readouts in 2022

Positive OS data in 1L NSCLC presented



Ph II (CITYSCAPE) results: Tiragolumab + Tecentriq in 1L PDL1+ NSCLC (n=58)



- With ~30 months of follow-up, an OS hazard ratio of 0.23 was achieved in the PD-L1 TPS ≥50% subgroup and the median OS was not reached
- Tiragolumab + Tecentriq combination well tolerated

Ph III trial program for tiragolumab

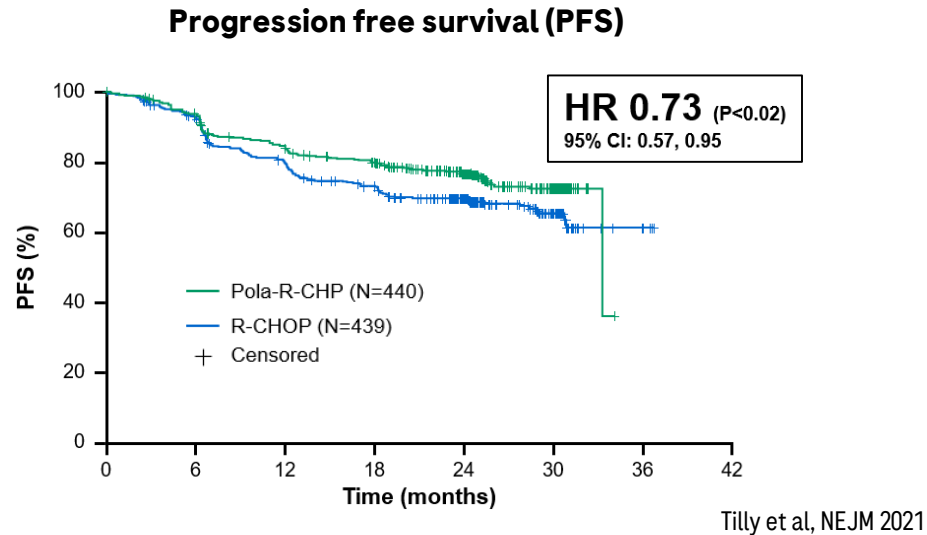
| | Indication | Ph 1 | Ph 2 | Ph 3 | |
|----------------------------|------------------------|-----------------------|---------------|------|------|
| Lung Cancer | 1L NSCLC: PD-L1 high | SKYSCRAPER-01 | | | 2022 |
| | 1L ES-SCLC | SKYSCRAPER-02 | | | 2022 |
| | Stage III unres. NSCLC | SKYSCRAPER-03 | | | |
| | Neoadj / Adj NSCLC | SKYSCRAPER-05 | | | |
| | 1L NSq NSCLC | SKYSCRAPER-06 | | | |
| | Solid tumors | Locally advanced ESCC | SKYSCRAPER-07 | | |
| 1L ESCC | | SKYSCRAPER-08 | | | 2022 |
| 2L+ PD-L1+ Cervical Cancer | | SKYSCRAPER-04 | | | 2022 |
| 1L SCCHN | | SKYSCRAPER-09 | | | |

- **Build on Tecentriq:** Improve on Tecentriq benefit in SCLC
- **Expand into early disease:** Trials initiated in ESCC and early NSCLC
- **Compete in new indications:** H2H trials in NSCLC vs. durva (stage III), pembro + chemo (1L)

Hematology: Improving the standard of care in DLBCL and FL

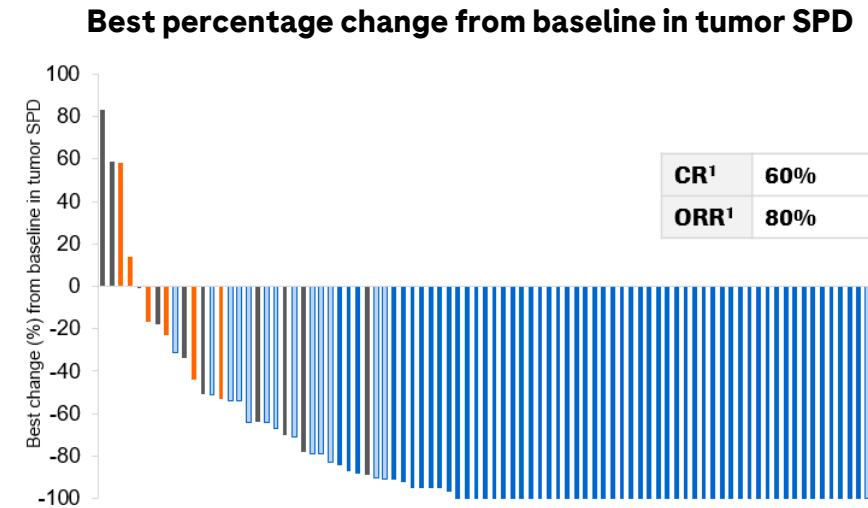


Ph III (POLARIX) results in 1L DLBCL First positive study in in 20 years



- Polivy + R-CHP significantly prolongs PFS with a HR of 0.73 in patients with intermediate and high risk 1L DLBCL
- Safety of Polivy + R-CHP and R-CHOP comparable
- Results filed in EU, Japan and China; US filing expected mid-year

Ph I mosunetuzumab step up dosing in heavily pretreated R/R FL



- Fixed duration treatment; 60% CR rate greater than 14% historical control CR rate; favorable tolerability profile (CRS low grade and cycle 1) for outpatient setting
- Ph III (CELESTIMO) mosunetuzumab + lenalidomide in 2L+ FL started in Q4 2021
- Mosunetuzumab in 3L+ FL filed in EU; US rolling filing initiated

Hematology: Ph III CD20/CD3 combination development in NHL

chemotherapy

1997
Rituxan
 Rituximab

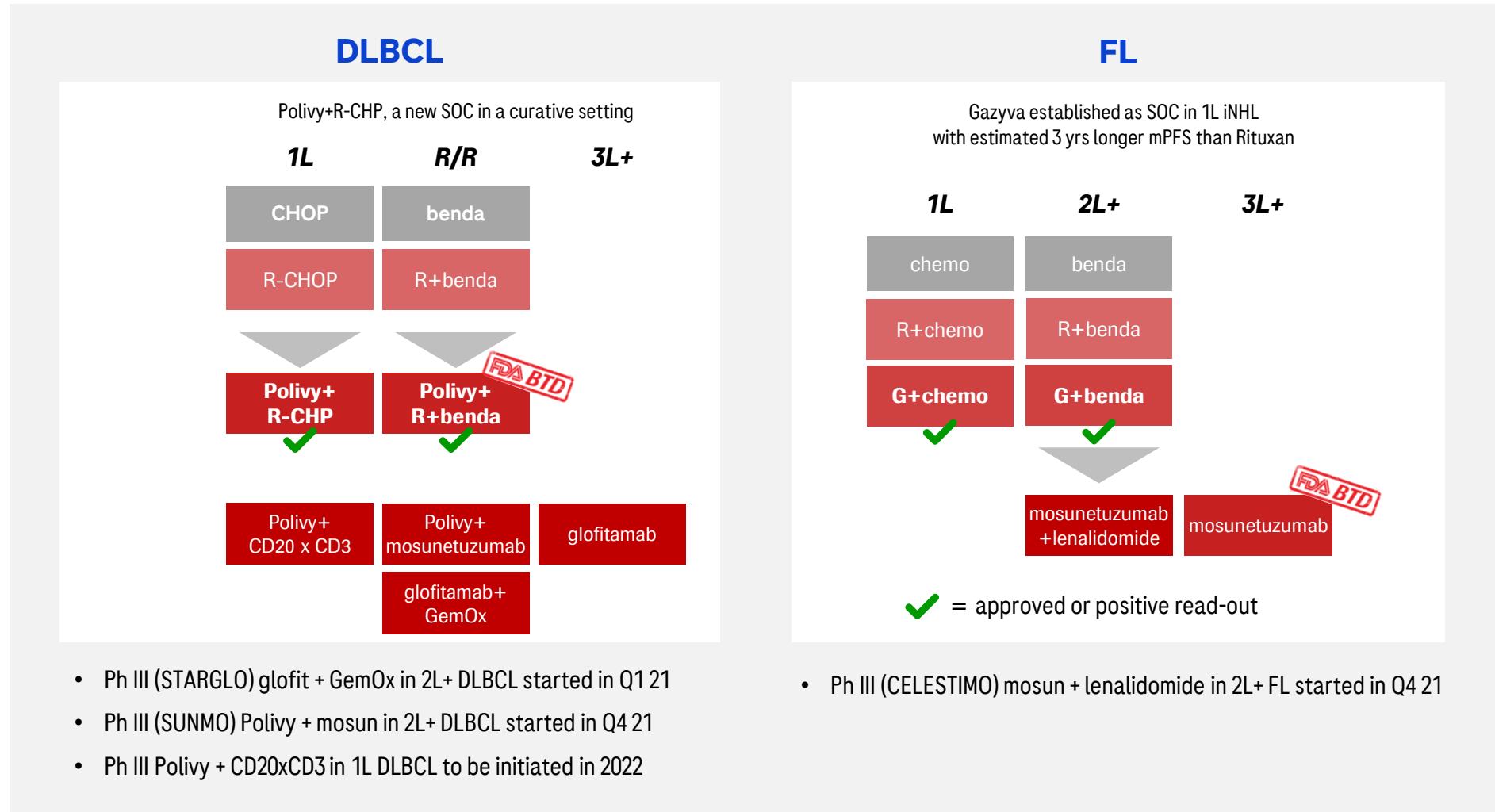
2013
GAZYVA
 obinutuzumab injection

2019
POLIVY
 polatuzumab vedotin

VENCLEXTA
 venetoclax tablets

2021/22 filing
 mosunetuzumab

glofitamab



Hematology: Expanding into AML, MM, MDS - Read-outs in 2022

chemotherapy

1997

Rituxan
Rituximab

2013

GAZYVA
obinutuzumab injection

2019

POLIVY
polatumumab injection

VENCLEXTA
venetoclax tablets

2021/22 filing

mosunetuzumab

glofitamab

Acute Myeloid Leukemia (AML)

Setting new SOC in a market which has been historically difficult to treat
Ph III (VIALE-M) in 1L fit AML maintenance initiated

1L unfit (50% of 1L patients)

| | | |
|--|-----------------------------|-----------------------------------|
| Historical SOC | LDAC low dose cytarabine | HMA azacitadine/ decitabine |
| Current/ Potential future SOC | Venclexta+ LDAC | Venclexta+ HMA |

Multiple Myeloma (MM)

Ph III (CANOVA) in t(11;14) R/R MM initiated
Ph I cevostamab monotherapy data presented at ASH 2020

| | |
|---------------------------|---------------------------|
| R/R t(11;14) | R/R |
| bortezomib+ dexamethasone | bortezomib+ dexamethasone |
| Venclexta+ dexamethasone | cevostamab |

Myelodysplastic Syndrome (MDS)

Ph I interim data presented at ASH 2020; Ph III (VERONA) started in 2020

| |
|------------------------------|
| 1L |
| azacitidine |
| Venclexta+/- azacitidine |

Total MM & AML market growing to USD 25bn & 7bn, respectively by 2024¹

= approved

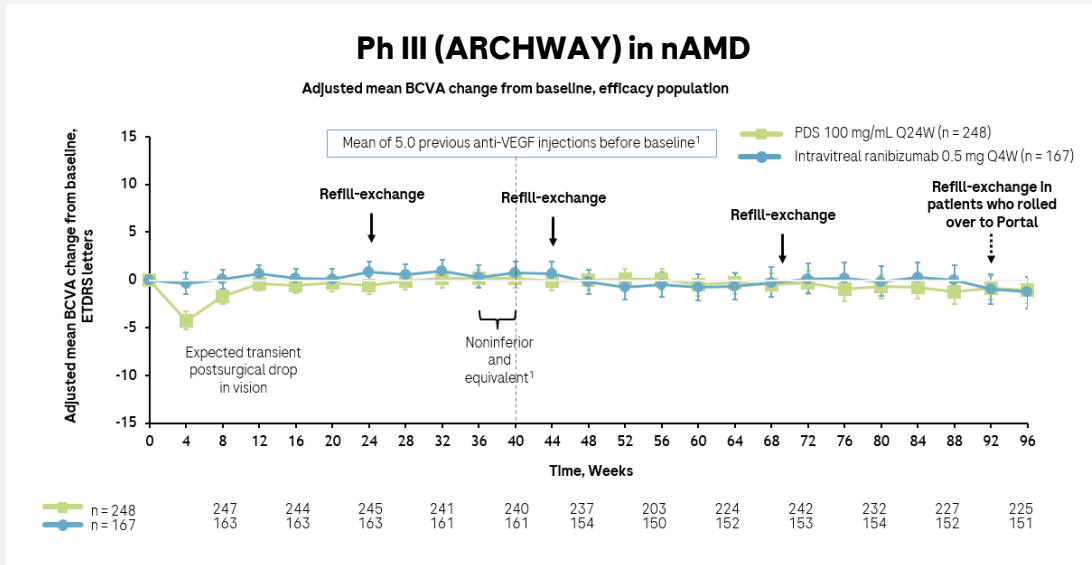
Ophthalmology franchise: Building a global business

Improved patient outcomes and reduced treatment burden



Angiogenesis, Exudation, Degeneration 2022
February 12
IR call on February 14

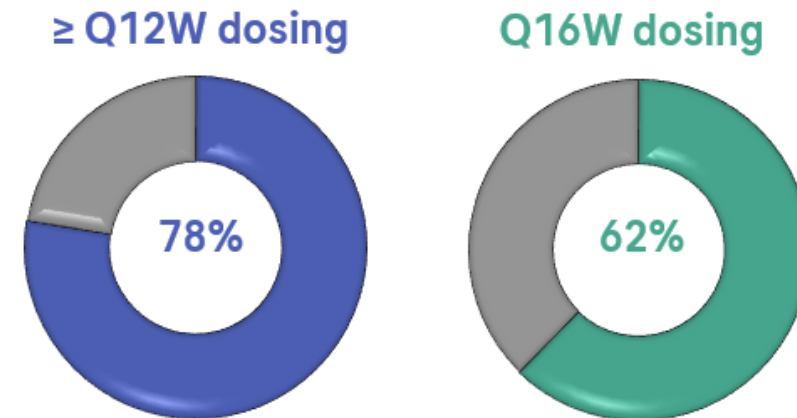
Susvimo maintained vision through week 96 with ~95 % of patients maintaining 6 month dosing



- First eye implant with continuous drug delivery offering alternative to frequent eye injections
- Ph III results in DME/DR expected in 2022, Ph III Q9M dosing on-going
- 2-year follow-up data in nAMD presented at Angiogenesis

Vabysmo achieved 78% of patients on ≥Q12W dosing and 62% on ≥Q16W dosing at year 2

Ph III (YOSEMITE, RHINE) in DME: Dosing intervals of patients



- New dual mechanism of action: Anti-VEGF/ Ang2 bispecific mAb with improved anatomical outcomes including central subfield thickness
- US approval achieved on Jan 28; Ph III trials in RVO on-going
- 2-year follow-up data in DME presented at Angiogenesis

2022: Key late-stage newsflow* and upcoming IR events

| | Compound | Indication | Milestone | |
|-------------------------------------|---------------------------------|-------------------------------|----------------------|---------|
| Regulatory | Vabysmo | nAMD/DME | US/EU approval | ✓ |
| | Susvimo | nAMD | EU approval | |
| | mosunetuzumab | 3L+ FL | US/EU approval | |
| | Tecentriq | Adjuvant NSCLC | EU approval | |
| | Hemlibra | Mild to moderate hemophilia A | EU approval | |
| | Polivy + R-CHP | 1L DLBCL | EU/US approval | |
| Phase III / pivotal readouts | glofitamab | 3L+ DLBCL | Ph Ib NP30179 | |
| | Tecentriq + tiragolumab + chemo | 1L ES-SCLC | Ph III SKYSCRAPER-02 | |
| | Tecentriq + chemo | Adjuvant SCCHN | Ph III IMvoke010 | |
| | Tecentriq + tiragolumab | 1L PDL1+ NSCLC | Ph III SKYSCRAPER-01 | |
| | Tecentriq | Adjuvant RCC | Ph III IMmotion010 | |
| | gliredestrant | 2/3L HR+ mBC | Ph II acelERA | |
| | Tecentriq + chemo | Adjuvant HCC | Ph III IMbrave050 | |
| | Venclexta + dexamethasone | t(11;14) MM | Ph III CANOVA | |
| | Tecentriq + chemo | Neoadjuvant NSCLC | Ph III IMpower030 | |
| | Tecentriq + tiragolumab + chemo | 1L esophageal cancer | Ph III SKYSCRAPER-08 | |
| | Alecensa | Adjuvant ALK+ NSCLC | Ph III ALINA | |
| | gantenerumab | Alzheimer's disease | Ph III GRADUATE 1/2 | |
| | Susvimo | DME | Ph III PAGODA | H2 2022 |
| | Susvimo | DR | Ph III PAVILION | H2 2022 |

**Virtual event
Angiogenesis**

**Monday, 14 February
16:30 to 17:45 CEST**

**Virtual event
MDA**

**Wednesday, 16 March
16:30 to 17:30 CET**

**Roche ESG Day
Access to Healthcare**

**Monday, 16 May
TBC**

**Virtual/live event
ASCO**

**June
TBC**

Roche Pharma Day

**Monday, 12 September
TBC**



* Outcome studies are event-driven: timelines may change

2022 outlook



Group sales growth¹

- Stable to low-single digit

Core EPS growth¹

- Low- to mid-single digit (including accretion of 4.4%p from share repurchase)

Dividend outlook

- Further increase dividend in Swiss francs

¹At Constant Exchange Rates (CER)

Doing now what patients need next