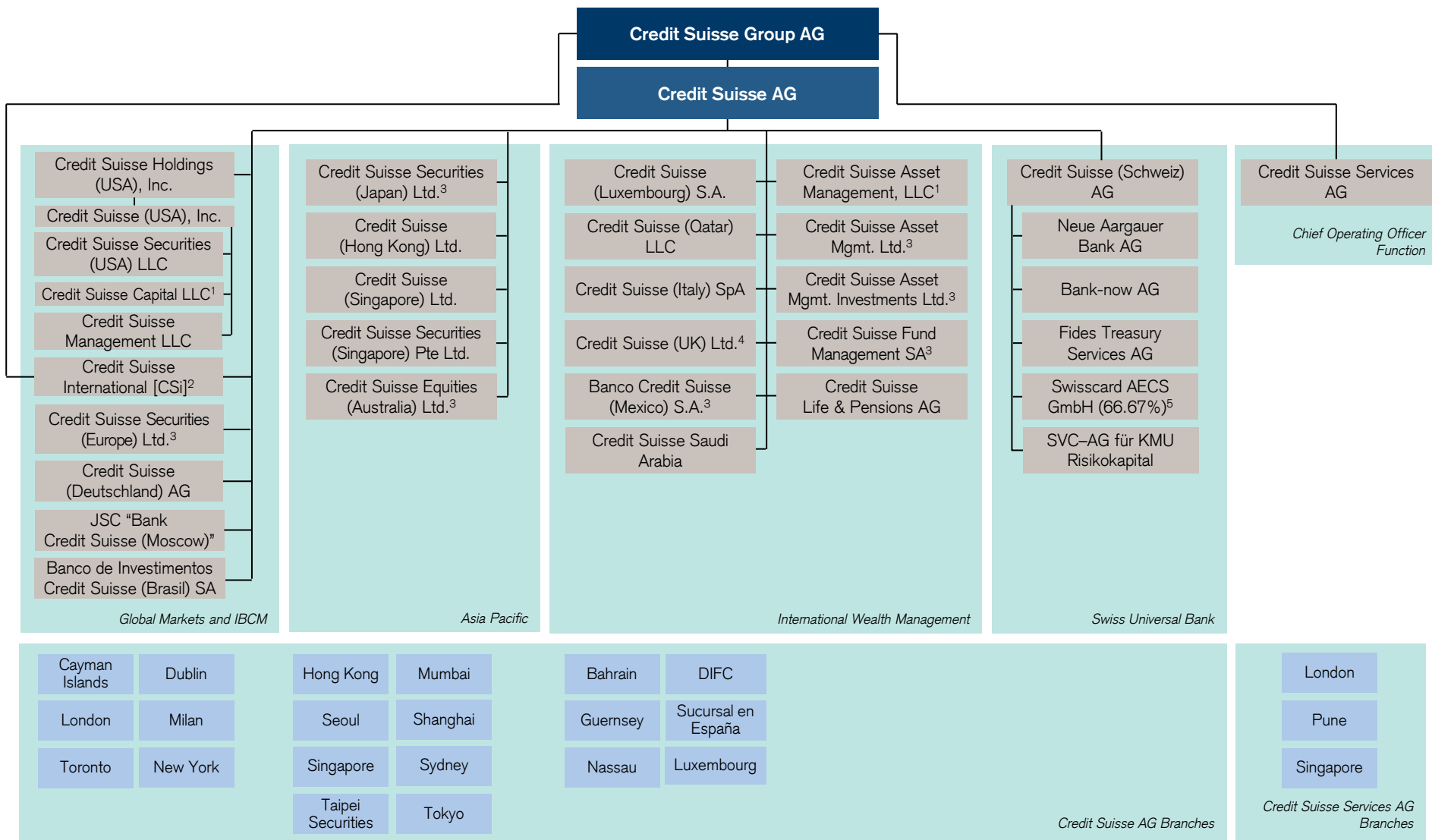


# Principal Legal Entities Overview – Credit Suisse Group AG



Information as of September 30, 2018. This Principal Legal Entities Overview shows information for selected entities and branches only. Note: This chart reflects voting interests only. All entities are 100% owned unless indicated otherwise  
 IBCM = Investment Banking & Capital Markets    DIFC = Dubai International Financial Centre    1 Indirectly held by Credit Suisse (USA), Inc.    2 CSI: Credit Suisse AG [Bank] directly and indirectly owns 97.59% of total voting and Credit Suisse Group AG owns 2.41% of total voting    3 Indirectly held by Credit Suisse AG [Bank]    4 Credit Suisse AG directly owns 75.34% and indirectly owns 24.66 % of total voting    5 33.33% of total voting held by third party