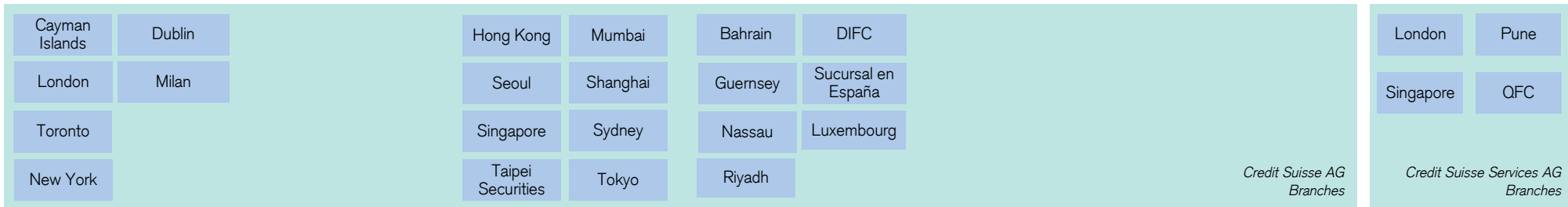
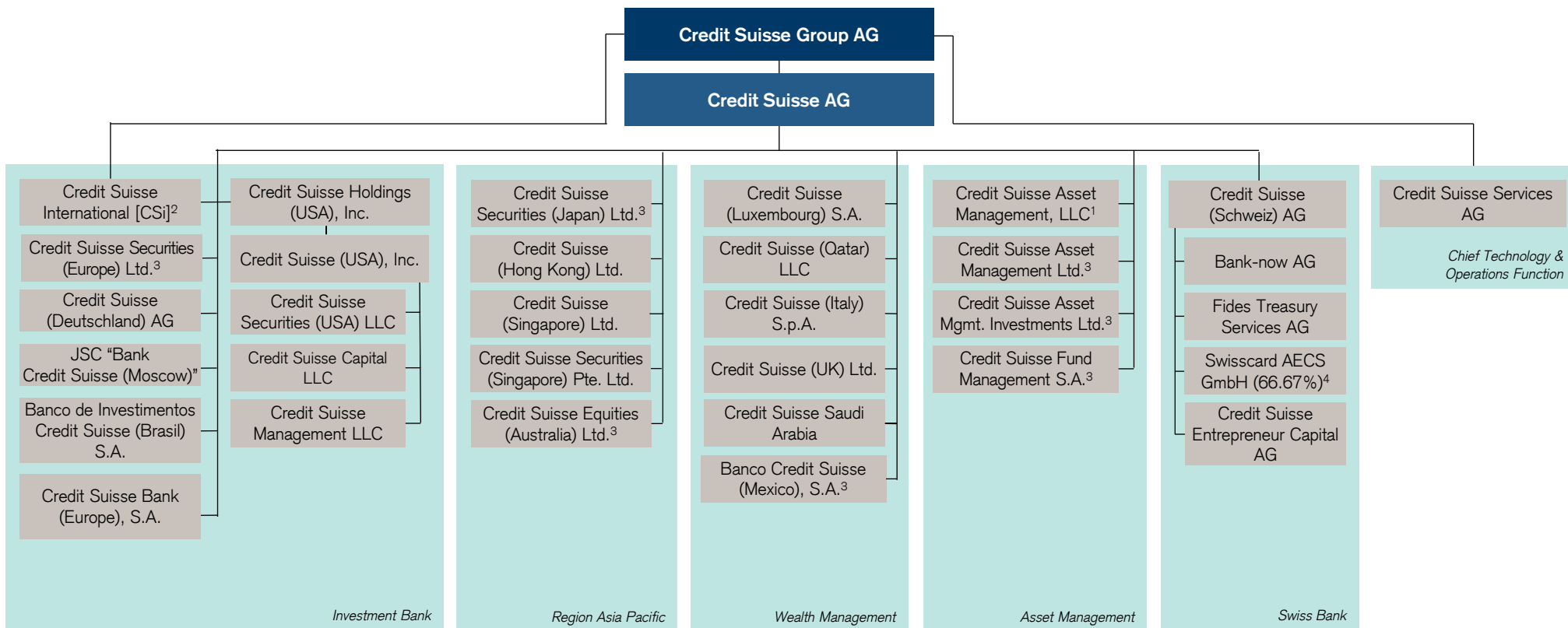


Principal Legal Entities Overview – Credit Suisse Group AG



Information as of January 1, 2023. This Principal Legal Entities Overview shows information for selected entities and branches only. Note: This chart reflects voting interests only. All entities are 100% owned unless indicated otherwise; DIFC = Dubai International Financial Centre QFC = Qatar Financial Centre

1- Indirectly held by CS (USA), Inc. 2 - CSi: Credit Suisse AG [Bank] directly owns 97.59% of total voting and Credit Suisse Group AG owns 2.41% of total voting 3 - Indirectly held by Credit Suisse AG [Bank] 4 - 33.33% of total voting held by third party