

# The family office guide to impact investing



## Exploring impact series: Part 3

This is a marketing material. For information purposes only, this presentation should not be used as a basis for investment decision. Investors in Austria / France / Germany / Italy / Spain: This marketing material is for professional clients only. DIFC: This presentation can only be offered to Professional Clients or Market Counterparties. This material is personal to each offeree and may only be used by those persons to whom it has been handed out. Singapore and Hong Kong: For Accredited Investors/Professional Investors only. This is for the recipient's use only. Strictly No Redistribution. Saudi Arabia: For sophisticated investors only.

# Foreword

## Message from the Chief Sustainability Officer and Global Head Sustainability Strategy, Advisory & Finance

I am delighted to introduce the **family office guide to impact investing**.

Family offices have been at the forefront of impact investing since the term was coined in 2007. However, the last five years have seen unprecedented growth in this space as sectors such as climate innovation, sustainable food & agriculture, education technology, and health and wellbeing have blossomed. We believe this growth will continue, offering family offices a deep bench of sustainable and impact opportunities across asset classes.

This paper is Part 3 of our **Exploring impact series**, which examines developments in the sustainable and impact investing sector. For this report, we teamed up with our Single Family Office team to dive into how family offices are taking up the impact challenge.

We look specifically at the role of family offices in deploying capital into this space, and provide guidance on how family offices can develop and implement sustainable and impact investing strategies. We feature case studies from four family offices at the forefront of this movement.

Part 1 of this series, **From ESG to the SDGs**, covers the shift in the market from concentrating solely on company ESG processes and policies to investments which directly address the UN Sustainable Development Goals (SDGs).

Part 2, **The double delta of impact investing**, explores how investors need to focus not only on the impact of the companies they are investing in, but also on their own “additionality”, that is, the value-add that they can bring to help these companies grow faster.

This paper builds on the thinking of the first two papers within the context of family offices, and offers a template, examples, and guidance for making it happen.

### **Marisa Drew**

Chief Sustainability Officer and Global Head Sustainability Strategy, Advisory & Finance  
Credit Suisse

At Credit Suisse, we believe family offices can play a key role in financing the growth of the world's most impact-generating companies. Sustainable and impact investing is not a new concept for families that have for generations invested according to their values and financed businesses that have helped to shape the world as we know it.

Yet over the last decade, we have seen a significant increase in the number of family offices consciously moving in this direction. They are aligning their investments with the family's values, engaging the next generation, managing risk in a changing world, and jumping on board fast-growing supertrends to drive the sustainable and impact investing movement forward. This is highly encouraging, and we see this growth continuing.

At the same time, we still have a long way to go when it comes to achieving the 17 UN Sustainable Development Goals (SDGs). An additional several trillion dollars per year will be needed to address these pressing global challenges. While government spending on research and development (R&D) and foreign aid along with private philanthropy are, of course, important, private investment capital will need to do the heavy lifting to pull billions of people out of poverty – and deliver healthcare, housing, and access to finance, infrastructure, and other essential services to the global population. Vast amounts of private capital will also be crucial to scaling up and financing the transition to a low-carbon economy.



Family offices are particularly well-positioned to step up. Large institutional investors such as pension funds have fiduciary duties that limit the risks they can take and the regions where they can operate. Very few are comfortable investing in the seed-stage venture capital funding of, for example, nuclear fusion or carbon-neutral cement startups. And few are willing to invest directly into many of the countries whose citizens constitute the poorest billion people on the planet.

By contrast, family offices and investors of private wealth generally face far fewer constraints. And there can be a more direct connection between the aspirations of the family and their ability to deploy capital to meet those aspirations.

This guide is designed to help families achieve their goals and, if they so choose, focus their investments on creating as much positive impact as possible.

We hope this guide proves useful as your family office embarks on or continues along its impact journey.

### **Dr. James Gifford**

Head of Sustainable & Impact Advisory  
Credit Suisse




The individuals mentioned in this page only conduct regulated activities in the jurisdiction(s) where they are properly licensed. Please, contact your Relationship Manager for further information.

# Content

07

## Understanding sustainable and impact investing

**Part 1** explains the sustainable investing spectrum with a special focus on impact investing.

Case studies 

Peter Brock

12

15

## The role of family offices in sustainable and impact investing

**Part 2** explores the role the family office can play in impact investing, highlighting the investing landscape and the drivers of impact.

Fernando Scodro

22

25

## Developing and implementing a sustainable investing strategy

**Part 3** offers family offices practical steps to develop and implement a strategy to maximize impact through investment.

Paolo Fresia

32


Giorgiana Notarbartolo

42

44

## Conclusion



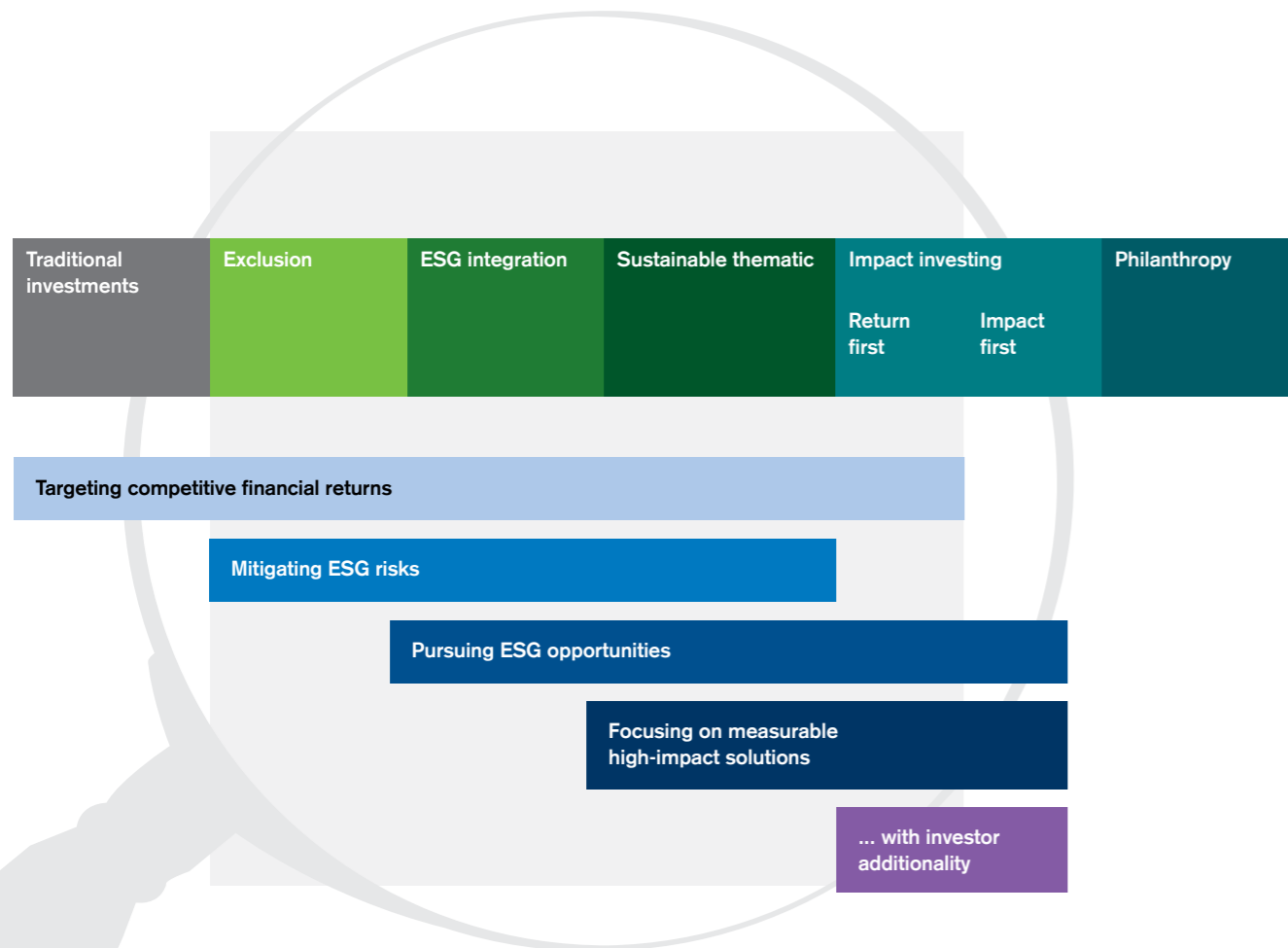
An aerial photograph of a vast solar farm installed on a hillside. The solar panels are arranged in neat, parallel rows that follow the curve of the terrain. The scene is captured during the 'golden hour' of sunset, with the sky transitioning from a pale orange near the horizon to a soft, hazy blue above. In the background, a range of mountains is visible, their peaks softened by atmospheric haze. A winding road or path is visible on the right side of the hillside, and a small blue structure, possibly a utility building, is situated near the base of the solar array.

Part 1

# Understanding sustainable and impact investing

# The sustainable investing spectrum

Sustainable investing can be seen as a spectrum of approaches that incorporate sustainability into investment decision making. Four overarching strategies have emerged over the last two decades.



**Source**  
<https://www.credit-suisse.com/sustainability/en/sustainable-finance/sustainable-investing.html>

## Exclusion

Exclusion strategies (also called ESG screening) typically involve the exclusion of firms or sectors that produce so-called sin products, such as tobacco, alcohol, adult entertainment, and weapons; or companies that violate human rights, breach UN norms, or cause severe environmental damage. They can be applied to both passive and active strategies, and in general do not exclude a large proportion of the investable universe.

## ESG integration

Catalyzed by the launch of the UN Principles for Responsible Investment (UN PRI) in 2006, these strategies systematically integrate environmental, social, and governance (ESG) factors into the investment process. They tend to focus on risk and opportunity around environmental issues, human capital, human rights, supply chain management, corporate governance, and other pressing issues. In addition, they often integrate ESG factors that can be material to the financial prospects of the investee companies and are applied most often in active management, with ESG issues considered part of the fundamental analysis of a company.

## Sustainable thematic

Due to strong growth in opportunities in the education, plant-based meat, healthcare, electric mobility, and clean energy sectors, fund managers have set up funds to invest in these themes. The interest in investing in solution-oriented companies has grown considerably since the launch of the UN Sustainable Development Goals (SDGs) in 2015, with mainstream investors now mobilizing significant capital in this direction. While ESG integration strategies tend to focus on the sustainability of the company's operations and processes, sustainable thematic strategies focus on investing in companies, primarily in public markets, whose products and services are inherently impactful.

## To dive deeper into the evolution of ESG and sustainable thematic approaches, see:

From ESG to the SDGs: The shift from process and policies to delivering positive contribution.<sup>1</sup>

## Impact investing

The term impact investing, coined by the Rockefeller Foundation in 2007, describes the subset of sustainable investing strategies that can deliver measurable impact. A key element is the investor contribution or additionality (see below). Impact investing has primarily focused on funding the growth of high-impact companies in private markets, in particular early stage companies and those active in developing countries, green infrastructure, and green/affordable housing. In terms of the public markets, the key mechanism for delivering measurable impact is via shareholder engagement and activism.

## For more information on the Credit Suisse approach to impact investing, see:

The double delta of impact investing: Impact at both the investor and company level.<sup>2</sup>

While this guide will dig deeper into the impact investing section of the spectrum, it is important to note that most sustainable portfolios will contain elements of all four sustainable investing approaches to balance out the higher-risk, less liquid part of the portfolio.

<sup>1</sup> <https://www.credit-suisse.com/media/assets/microsite/docs/responsibleinvesting/esg-to-sdgs-2020.pdf>

<sup>2</sup> <https://www.credit-suisse.com/media/assets/microsite/docs/responsibleinvesting/the-double-delta-of-impact-investing.pdf>

# Additionality: The secret to impact investing

For families wishing to use their capital to make a tangible difference in the world, impact investing is essential.

According to the Global Impact Investing Network, impact investments are investments made with the intention to generate positive, measurable social and environmental impact alongside a financial return.<sup>3</sup> A key element of impact investing is the investor contribution or additionality. That is, would the impact have happened without the investment or the activities of the investor? Put another way, it refers to the value-add an investor can bring to a company by generating more impact than if the investor had not invested at all.

Additionality can be realized via two mechanisms: financing the growth of impact-generating companies in private markets or, in the case of public companies, investing in strategies that press for improvement through shareholder engagement and voting at annual general meetings (AGMs).

An important concept is what we call the double delta of impact investing, which is explored in depth in "The double delta of impact investing" publication.<sup>4</sup> For an investment to have impact, it must demonstrate that it can create change on two levels:

- **Company impact (Delta 1):** the positive impact/change a company generates through its products and services, for example by delivering low-carbon technologies, life-saving therapies, or access to financial services for low-income populations
- **Investor impact (Delta 2):** the additional impact/change an investor helps the company generate by enabling it to grow faster or be more effective, either via financing growth or through active ownership activities



<sup>3</sup> <https://thegiin.org/impact-investing/need-to-know/#what-is-impact-investing>

<sup>4</sup> <https://www.credit-suisse.com/media/assets/microsite/docs/responsibleinvesting/the-double-delta-of-impact-investing.pdf>

# Case study



Peter Brock

We spoke with Peter Brock, Investment Director at 4L Vision, a single family office committed to 100% impact.

**Q. How did the family office get into impact investing?**

Our story starts with our principal, who sold an IT service provider for the legal industry back in 2016. He wanted to re-focus his life on making a difference, which triggered his interest in creating impact through his investments. He really wanted to focus on impact investments and not just ESG, where investing in the “best” companies or leaving out the “worst” can only do so much. He really wanted investments that can make the world a better place.

**After the sale of the company, he joined forces with a colleague and created his family office, 4L Vision, for his direct entrepreneurial investments.**

**Q. What is your approach to impact investing?**

Through 4L Vision, we have made over 20 direct impact investments to date. 4L Vision is the more entrepreneurial arm where the illiquid investments are made. We believe that impact can nowadays be achieved via all asset classes, and we currently also have a focused global listed equities portfolio and achieve diversification through direct investments and venture capital funds.

The family office has developed its own stock picking process to choose impactful companies based initially on standard ESG criteria. But for us, ESG integration is not enough. We do an analysis of fundamental company data, alongside micro and macroeconomic data. As well as this, the impact selection process starts with a very strict negative and positive screen alongside alignment with the SDGs. I would say that we exclude around one third of companies in the broader universe.

**We also like to invest in small- and medium-sized enterprises where opportunities exist to drive real, positive impact. We focus on three themes: food, digital/education, and climate. These themes allow us to build a diversified portfolio of investments, which have grown organically over the years.**

**Q. How do you measure sustainability and impact within the portfolio?**

For our public market investments, we use a number of tools for ESG integration and reporting, including some of the standard ESG research providers. As there is still no standardized measurement process for impact investments, impact is measured and monitored on a case-by-case basis in the direct investment portfolio. For example, how do you compare and judge which impact is more important between two very different companies or themes? For example, is it better saving X tons of CO2 with a carbon reduction strategy or saving Y number of cancer patients through businesses involved in medical innovation? This is not an “apples to apples” comparison.

**On the direct investment side, we agree on a number of impact/sustainability key performance indicators (KPIs) with the underlying companies alongside investment goals that we then measure as we undertake the investments. The same is true for the impact venture funds that we are invested in, where we take an active entrepreneurial approach. We also want to see that the fund management team measures their performance not only financially, but also with regard to achieving the intended impact.**

**Q. How did you build out your team and capabilities? And how about collaborations with other family offices?**

We have a team of seven or eight people doing portfolio management and research for the liquid side of things. On the private markets side, we collaborate with another single family office, and combined, we have around five people looking at direct deal flow and VC funds.


**We are set up with a network of partners that have enabled us to operate as a fully-fledged family office. 4L Vision works together with a law firm and we also have a bookkeeping company as part of our network.**

Regarding external networks, we are a member of Tonic, a network of family office investors focused on impact. We are also active in the German Federal Initiative for Impact Investing (Bundesinitiative Impact Investing), of which I am a founder, and actively contribute to the impact ecosystem – there is still a lot to do to make impact investing the new normal.

**Q. What advice do you have for other family offices interested in this space?**

For those wishing to get involved in impact investing, I would suggest that they start by exploring the family’s values. What values do you have as a family? What intentions bring you to impact investing? If you want to employ your capital wisely then start with your values. Once you have done this, you can see how the values transfer to your investment policy statement.

And know that financial returns and impact aren’t mutually exclusive. Good investments with good impact and good returns exist. Simply get started – there are enough great impact investments out there (both liquid and illiquid) for your individual investment strategy. No excuses – the time is now!

An aerial photograph of a wind farm situated on a mountain ridge. The landscape is covered in green grass and dotted with rocks. A winding dirt road leads through the terrain. Several white wind turbines are visible, some in the foreground and others further up the ridge. The sky is a mix of blue and white, with mist or low clouds hanging over the valley. The overall scene is serene and emphasizes sustainable energy in a natural setting.

Part 2

# The role of family offices in sustainable and impact investing



# Introduction

In 1882, John D. Rockefeller Sr. established the Rockefeller family office, which was the first family office as we know it today.<sup>4</sup> Over a century later, in 2007, the Rockefeller Foundation coined the term impact investing to encourage a greater focus on – and the building of a community of investors around – the high-impact end of the sustainable investing spectrum. The strategy was primarily centered on private market investments in developing countries and disadvantaged communities in developed markets.

Since then, family offices and the impact investment sector have grown in terms of both assets and sophistication. According to a 2020 survey by the Global Impact Investing Network (GIIN), the impact investing market is worth USD 715 billion and is one of the fastest-growing subsets of the investment industry.<sup>5</sup> Many family offices are incorporating impact investing into discussions about the responsibility of wealth ownership, financial objectives, diversification, philanthropy, succession planning, and legacy creation.

**49%** of SFOs plan to increase sustainable investments in the next 2-3 years

Source: Credit Suisse SFO Survey Report 2021<sup>6</sup>

<sup>4</sup> Family offices: a history of stewardship, Financial Times 2017  
<sup>5</sup> www.thegiin.org/assets/GIIN%20Annual%20Impact%20Investor%20Survey%202020.pdf  
<sup>6</sup> https://www.credit-suisse.com/international-wealth-management/en/insights/single-family-offices/2021-10-the-big-picture-sfo-survey-findings.html  
<sup>7</sup> https://www.ncfp.org/wp-content/uploads/2021/06/Mapping-Families-Interests-and-Activities-in-2020-The-Impact-2021.pdf

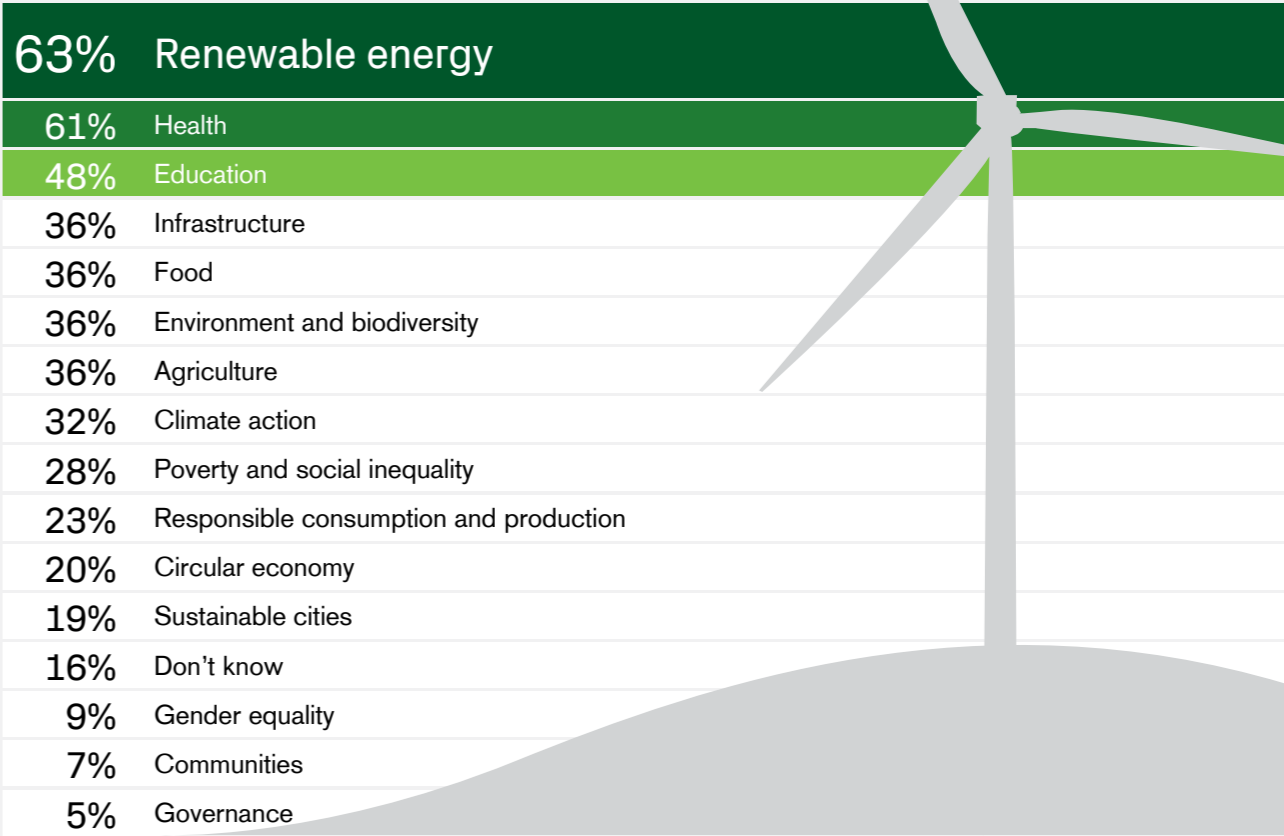
# The growth in this space

Family offices are rapidly becoming more engaged in the sustainable and impact investing market. A recent survey from 2021 by the University of Zurich and The ImPact found that up to 30% of the total assets held by the families surveyed is allocated to impact investing.<sup>7</sup>

A recent survey by Credit Suisse from 2021 revealed that nearly half of the single family offices (SFOs) surveyed intend to increase their sustainable investments in the next two to three years.

According to the same survey, renewable energy, health, and education are considered the most compelling impact investment areas for SFOs.

## SFO areas of interest for sustainable investing



For more information regarding the survey on SFOs, please see our publication: **Single family offices. A view of today and tomorrow**<sup>6</sup>

# Drivers of impact investing

A number of factors are driving the growing interest in sustainable and impact investing.

## Capturing returns from fast-growing sectors

Society is creating demand for more environmentally and socially friendly approaches to business, which is propelling the rise of technology-driven and disruptive companies. While many are still early-stage companies that involve higher risk, some family offices are building portfolios of these companies with the expectation of capturing outsize returns. Disruptive sectors range from education technologies (which have boomed due to

COVID), medical devices, and remote diagnostics to low-carbon technologies, including new battery technologies and the next generation of solar, wind, and nuclear energy. There has also been tremendous growth in high-impact companies in developing countries that deliver financial services to underserved populations, increase crop yields, and disintermediate inefficient supply chains, to name just a few examples.

### ■ Financial returns

As with traditional investments, sustainable and impact investments aim to deliver financial returns. For most of the vehicles in the market, there is no expectation of sacrificing financial returns for impact or sustainability attributes.

As large pools of capital shift from old industries to new (e.g. fossil fuels to renewable energy, physical to digital), this increases the flow of money into more sustainable businesses while creating an opportunity for passionate entrepreneurs who want to solve societal problems through commercial business models. Family offices can potentially generate strong returns from investment in these innovative companies.

At the same time, traditional businesses are responding to the demands of customers, regulators, activists, and their own employees by becoming more sustainable, and for good business reasons. A meta-study by Friede, Busch & Bassen (2015) of more than 2,000 peer-reviewed academic studies found that over 90% showed a positive or neutral relationship between ESG and financial performance.<sup>8</sup>

### ■ Societal returns

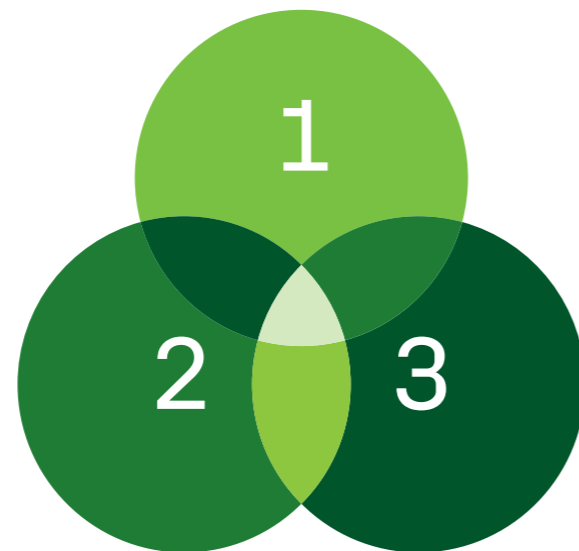
The world is facing significant environmental and social challenges, notably climate change, resource scarcity, and human rights issues. Climate change alone – arguably one of the most challenging tests of our time – threatens the livelihoods of billions of people and the planet's biodiversity. As the COVID-19 pandemic has exposed the fragility of society, many investors now recognize the need to act. Impact investing offers families a way to address pressing global problems, mitigate risk, and underpin long-term value creation.

It is important to point out that while philanthropy is vital in helping to tackle many issues, it represents a relatively small proportion of global economic activity. It is also insufficient for tackling certain challenges, such as unemployment and the lack of growth in underdeveloped economies. While philanthropy can be a catalyst to change, a large-scale deployment of commercial capital will be instrumental to the growth of impact-generating businesses and the scale-up of new technologies. Impact investing can allow families to complement their philanthropic activities with investments that solve different problems while delivering financial returns.

## Three dimensions of returns

While traditional investments are designed to deliver only one type of return – financial – impact investing can deliver three distinct types of return.

- 1. Financial returns
- 2. Societal returns
- 3. Experiential and family returns



<sup>8</sup> Friede, Busch & Bassen (2015)

A recent Credit Suisse survey of the “NextGen” revealed:

**27%** view creating a positive impact in society as the most important factor when building a family legacy

**62%** are investing in impact investments

**97%** are interested in actively managing their family’s investments

Source: The Global Next Generation Report “Creating a world with the Next Generation”<sup>9</sup>

■ **Experiential and family returns**

Impact investing also delivers experiential returns directly to the family, including:

■ **Aligning and passing down family values:**

An impact investment approach enables families to build and preserve their family’s legacy and align their values with their investments over generations.

■ **Strengthening family unity:** Impact investing can bring a family together through a shared mission to invest in a way that creates impact. Philanthropy has long served this purpose, with different branches of the family uniting for philanthropic activities. Impact investing can serve a similar function, but with the dual function of building commercial investment portfolios while delivering social and environmental returns.

■ **Developing next generation skills:**

Families can leverage impact investing to engage younger members of the family and help develop their investment skills. Many families are concerned that future generations may not have the financial skills to protect and grow the family’s capital. Sustainable and impact investing strategies offer a values-aligned way to learn about investing in areas of greater interest to younger generations.

■ **Developing new areas of domain expertise:**

Families that own or used to own legacy businesses often have deep and specific domain expertise. In this fast-changing world, however, families and businesses need to adapt. Investing in sustainable and impact themes – such as tech disruptors in developing countries, climate innovation, education technology, and healthcare – can provide families with a powerful learning platform, where they can diligence funds run by specialist fund managers and then co-invest with them.

See Credit Suisse & the Young Investors Organization (YIO) (2019)  
Creating a world with the Next Generation<sup>9</sup>

# Why family offices are well positioned to embrace impact investing

Most family offices are relatively young and agile, established to manage significant capital only in the last two decades (see graph).<sup>10</sup>

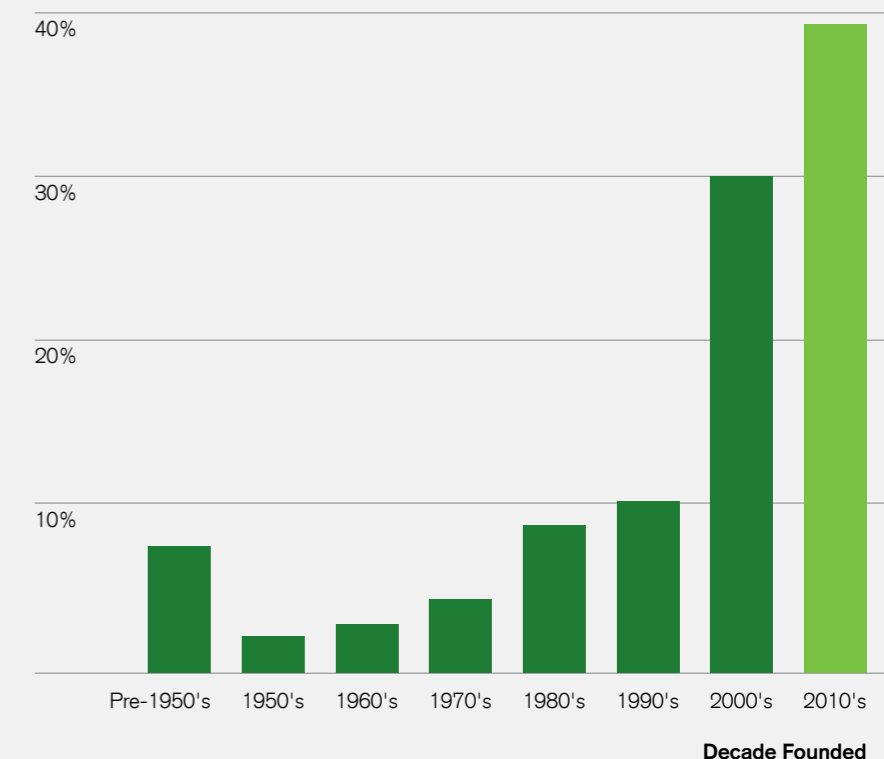
While some family offices are still connected to legacy businesses, many are not. A recent study by McKinsey found that the average lifespan of companies in the S&P 500 in 1958 was 61 years. Today, it is less than 18 years. The authors believe that by 2027, 75% of the companies currently quoted on the S&P 500 will have disappeared.<sup>11</sup>

As the majority of family offices have grown up in a climate of rapid corporate evolution and innovation, they are less afraid to back new ideas, allocate capital, and pursue dynamic risk management.

Family offices can also benefit from institutional scale and are able, for example, to hire highly skilled investment professionals with fewer regulatory (and other) constraints. This allows family offices to get involved in early-stage ventures where the returns, need for financing, and potential for impact are high.

## Millennium boom

Most family offices have been set up this century



Source:  
The Global Family Office Report 2018  
UBS and Campden Wealth

<sup>9</sup> <https://www.credit-suisse.com/microsites/next-generation-and-families/en/next-gen.html>

<sup>10</sup> <https://www.ubs.com/global/en/wealth-management/uhnw/global-family-office-report/old-edition/global-family-office-report-2018.html>

<sup>11</sup> <https://www.mckinsey.com/business-functions/organization/our-insights/six-building-blocks-for-creating-a-high-performing-digital-enterprise>

# Case study



Fernando Scodro

Fernando Scodro is a third-generation member of an entrepreneurial family in Brazil. Some years ago, his father sold his company and established a family office. Fernando had a mission: to develop the impact investing arm of the family office.

**Q. How did your family get into sustainable and impact investing?**

I was invited by the Young Investors Organization (YIO) to participate in a course on impact investing for the next generation at Harvard. While participating in the course (now jointly run with the University of Zurich), I was working at one of my family's investment companies in the area of energy efficiency and instantly fell in love with the company. The business model of the company allowed for both the clients and the environment to profit as clients would make money while reducing their energy usage. It was a win-win.

In the Harvard course, I learned that what the company was doing was simply impact investing. This got me thinking. Why don't I do this with my family? And why not across my family's entire portfolio? And so, my family's impact investing journey began.

**Q. Once you had decided to pursue impact investing, how did you start?**

Although I was eager to get involved, my dad was the main person taking care of the family office at the time. While my family speaks English, it is not their native language. So I translated the entire Harvard course into Portuguese to help my family better understand impact investing and what it was that I was trying to do. This was an important step. It was also a very good way of engaging my mother and sister who weren't a part of the business before. I felt that since we would project the family's values into the portfolio, they should also have a say.

**Q. How did you move from vision to execution and implementation? What was your strategy?**

I started by asking my family for some time off to fully understand impact investing and how I could make my thoughts and ideas actionable. Together with The ImPact – an impact investing collaboration of family offices – I started doing some translation work while working with other families and looking at what they were doing within their portfolios. I started to get a feel for what it was that I needed to do.

The first step of the Harvard program is “Know what you own!” I took the phrase very literally at the beginning. What do we currently have in the portfolio? Once you know what it is that you own, you can start working with partners and advisors to assess the best approach for each asset class to transition to impact investing.

We didn't want to over-engineer things or focus solely on metrics, so we decided on five broad themes to guide our investments: access to education, access to healthcare, gender equality, access to better food, and climate change.

**Q. You mentioned working with advisors. Who else is part of your impact team?**

Each family office is different, and we tend to do a lot in-house. I didn't see much point in hiring a consultant as that was a role that I had decided to take on. But we did have some advisors, including within banks, who provided us with financial knowledge and guidance.

We now also have the operating partners from our companies as well as other families that we co-invest with. I would say that having a smaller team of decision-makers allows us to be more agile when it comes to investing.

**Q. How long did it take to get your strategy up and running?**

I would say the entire process took around two to three years to get our investment portfolio to where we are now, around 20% sustainable, with the intention of achieving 100% in the coming years.

**Q. Was there anything that you found particularly challenging?**


I found that impact investing varies in terms of difficulty depending on the asset class. As an example, with venture capital, it's relatively simple to measure the additionality and theory of change of the investments. Other asset classes, such as public equities and real estate, are a lot trickier.

As a family office based in Brazil, we were unable to invest in a lot of funds domiciled outside of Brazil. This lack of access meant that we missed out on some of the best impact investing deals and products. But for every challenge, there is an opportunity. The lack of access to impact investments meant that we had to set up an arm of the family office elsewhere, and we chose Singapore. This provides us with direct access to advisors and products in the APAC region.

**Q. Do you have any suggestions for other families wishing to embark on a similar impactful journey?**

Every family should start by really “knowing what they own.” This should be the first step and it isn't at all time-consuming. Once you do, you can start progressively investing sustainably without necessarily affecting the investment structure of the family office. I think that impact investing helped shine a light on what it means to guide a family office while bringing some structure to what we are doing.

In terms of family dynamics, impact investing can also be a great way to bring a family together. For me, it brought my mother and my sister into the investment conversation smoothly.

An aerial photograph of a large concrete dam with a curved spillway. The dam is situated in a valley with a dense forest of green trees on the left and a rocky, greyish-brown slope on the right. A large reservoir of deep blue water is visible behind the dam. The sky is clear and blue. The text 'Part 3' is overlaid on the right side of the image.

Part 3

# Developing and implementing a sustainable investing strategy

# Developing your strategy

It is important for family offices to develop a clear strategy regarding their sustainable and impact investments, and investments as a whole. The strategy development process – the output of which is captured in an investment policy statement (IPS) – can take significant time, particularly when many stakeholders are engaged in the process. However, taking the time to undertake this process and come to agreement can not only prevent conflict, but also ensure that areas of potential disagreement among stakeholders are addressed up front.

An IPS documents a family’s investment preferences, philosophies, governance, and key elements of the investment process. It provides clear guidance for advisors and other intermediaries to help them implement the wishes of the family in a disciplined way. An IPS should be viewed as a long-term plan and reviewed at least annually, with amendments made if necessary to reflect the changing circumstances.

The following sections outline the key elements of the strategy process that are most relevant to sustainable and impact investing.

## 1.1. Defining the values and mission

It is important for families to define their values – setting out their motivations and philosophies regarding their investments – and the role they see for sustainable and impact investing.

The IPS often starts with a values or mission statement.

### Example 1

The mission of our family office is to safeguard the future of the family – current and future generations – by delivering financial security to the family and leaving a better world than the one we inherited. Our investments should have a positive social or environmental impact. We aim to make a positive contribution to climate action, ocean, health, and biodiversity – and to deliver social outcomes in education and empower underprivileged and marginalized groups.

Some families are clear about their values, making the process of developing a mission statement simple. Other families go through a lengthy values exploration exercise, which can be facilitated by consultants experienced in such processes or by family members themselves.

### Questions that families would typically consider in these processes include:

- What is our wealth for?
- To what degree should it be aligned with our values?
- What are our common values?
- What are our views about the future of the environment and society, and what is the role or potential role of our capital in that?
- How relevant are sustainability factors in the future of the economy, and do we believe that sustainable companies, or companies that leverage sustainable megatrends, can outperform?
- How could our capital be leveraged to develop the skills of the next generation?
- How could our capital be used to build domain expertise within the family in new and innovative industries?
- How could we use our capital to help bring family members together and forge a powerful set of ethical values to be passed down to future generations?
- How could our capital be used to engage family members and keep the family taking part in meaningful activities together?

Most families also include basic exclusions of sectors or companies that are not aligned with the family's values.

**Example 2**

Our mission is to have a real and positive impact on the world by investing in high-impact strategies, while increasing family unity and transferring family wealth, values, and heritage from one generation to the next.

- We believe that sustainability can add value to the investment process and should be incorporated into all investment decisions
- We believe that many of the industries of the future are focused on sustainability, and we would like to invest in innovation
- We believe our capital can deliver not only attractive financial returns, but also measurable positive impact

**Example 4**

No investments will be made in companies that derive more than five percent of their revenue from products or services that are contrary to our values. These include:

- Tobacco
- Weapons that are subject to UN conventions seeking their elimination (e.g. cluster munitions and anti-personnel landmines)
- Companies that are in severe breach of UN norms or accused of serious environmental or human rights violations

review the portfolio holdings monthly to ensure that such companies are not included and will otherwise dispose of them immediately. No fund that includes such companies will be included in the portfolio.

The relevant advisors and fund managers will

## 1.2. Establishing sustainability and impact preferences

The next step is to identify a set of preferences that guide the family's sustainable and impact investing strategy.

Some families have clear thematic preferences and would like to address specific challenges, such as climate change, social justice, or education. The UN Sustainable Development Goals (SDGs) are now a standard reference and can help define the family's priority issues.

**Example 3**

Given the risk/return, liquidity, and other financial constraints set out in the investment objectives, we prefer, where possible:

- High-impact strategies over low-impact strategies
- Strategies or funds with quantitative impact metrics
- Early-stage over later-stage companies/funds
- In listed equities, we prefer:
  - Funds that undertake robust shareholder engagement and report on outcomes
  - Funds that vote their shares in support of ESG-related shareholder proposals
- Higher exposure to emerging and developing economies

**Example 5**

Through our investments, we aim, where possible, to have positive impact that is aligned with the UN Sustainable Development Goals (SDGs), in particular:

- UN SDG 1: No Poverty
- UN SDG 4: Quality Education
- UN SDG 13: Climate Action
- UN SDG 14: Life Under Water



Learn more about:  
UN Sustainable Development Goals (SDGs)  
<https://sdgs.un.org/goals>

While it is possible to seek out investments in specific areas, only a few themes such as Climate Action offer sufficient depth of investment products to build a diversified portfolio. It may be easier to seek to maximize impact more broadly through an increased allocation in private markets and shareholder engagement strategies. If investment opportunities then arise in the preferred themes, they can be pursued. Setting thematic constraints that are too strict can make investment difficult. A narrow approach could also result in less effective strategies that match the theme (e.g. in listed equities) rather than strategies that create more impact (e.g. in private markets), but in another theme.

### 1.3. Developing an impact investing transition plan

---

Family offices that start with a traditional portfolio must decide how best to transition to a sustainable, impact-generating portfolio. Options include:

**Carve-out:**

This is for families that would like to experiment with sustainable investing but are not yet ready to implement it across the whole portfolio. One advantage of this approach is that it offers a test portfolio with a smaller volume of capital which can be evaluated against the expected outcomes and potentially scaled up over time. The carve-out also allows families to take considerable risk in high-impact strategies without worrying about the financial implications on the core portfolio.

**Integrated:**

This approach integrates sustainable and impact investments into the overall portfolio allocation step by step. A family's existing return expectations, risk tolerance, and target asset allocation – as defined in their investment policy statement – serve as the basis for their investments. Assets can be shifted or swapped out over time in favor of more sustainability and impact.

**Total portfolio:**

Families deciding to go “all in” can develop a plan to transition the entire portfolio into sustainable and impact strategies. In most cases, families start with a carve-out or integrated approach before transitioning 100% of their portfolio. Families that benefit from a liquidity event and are already confident in their direction may opt to build a sustainable and impact-focused portfolio from day one.

### 1.4. Establishing investment objectives

---

The family office needs to determine a set of clearly defined investment objectives. Even if the family prefers to direct a significant proportion of their portfolio to impact-first investments, they will need to establish financial objectives and constraints – as is the case with any investment.

Typical investment objectives set out in the family's investment policy statement include:

- Return objective
- Risk tolerance
- Distributions
- Asset allocation
- Investment time horizon
- Liquidity constraints

For more information on the important elements of an IPS, we suggest consulting the many resources available for family offices on this topic.

### 1.5. How do impact objectives interact with investment objectives?

---

**“Returns first” allocations**

It is important to clarify which objectives are the most important and which are secondary. Because this is investing rather than philanthropy, financial objectives typically come first. Family offices often seek market-rate risk-adjusted returns for most of their assets – that is, returns that are in line with or exceed relevant asset class benchmarks. For these assets, the financial objectives should be set, and then the most sustainable and impact-focused investment strategies per asset class identified (please see Example 3 above).

If a family aims to maximize impact through investing, liquidity could be the most important variable and greatest obstacle to overcome.

While there are some shareholder engagement and activist funds available in listed equities, most impact investments are found in the private markets, notably in venture capital, private equity, private debt, green/affordable real estate, real assets (forestry and agriculture), and green infrastructure. In short, a family aiming for impact will need to have a significant allocation in illiquid private market investments.

Robust financial planning allows the family to ensure it has sufficient liquid assets, income, and distributions to support its needs – including a buffer for contingencies – while allowing for a significant increase in illiquid investments. Rather than making a liquid portfolio the default, the family seeking maximum impact can opt for a portfolio that is liquid enough to meet their cash flow needs, and then allocate the rest to illiquid, high-impact strategies.

---

See Paolo Fresia Case Study, Page 32

---

**“Impact first” allocations**

Some families have specific allocations for high-impact investments, where the returns are not as important as the impact. With these allocations, impact objectives would be established, and then the best investments would be found that reach those impact hurdles.

Whether the priority is on returns or impact, it is important to clarify these objectives for each asset class.

**Example 6**

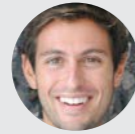
**High-impact allocation:**

Up to ten percent of the portfolio is allocated to “impact first” investments that can deliver significant and measurable impact in line with the thematic preferences set out above. Within this allocation, investments that can catalyze new industries and technologies or deliver

fundamental change should be prioritized. While these investments do not need to align with the investment objectives, they should aim to return capital that can be deployed in future high-impact investments. If capital is not returned but significant impact is achieved, these investments should be considered successful.



# Case study



Paolo Fresia

Paolo is an impact investor and investment director at 100% Sustainability, his family office based in London.

His main areas of focus include:

1. Mitigating climate change
2. Promoting sustainable production and consumption
3. Reducing gender and LGBTQI+ inequalities.

**Q. How did you get into impact investing? How did you kick off the process?**



I inherited capital and was tied into a family office where priorities didn't align, in terms of both impact and financial needs. As such, I decided to split from the family office and start my own. At the beginning, a lot of my financial assets were tied up as mandates, mainly in large single stock positions and cash. I had to restart from zero.

**I began by gaining better clarity on my vision and mission: what are the biggest social and environmental issues the world is facing? Where can my flexible, patient investable capital generate the most impact? What am I passionate about, so that I can throw my full weight behind what I get involved in? Answering these questions allowed me to find a broad thematic focus and provide initial guidance to my advisors.**

**Q. How did you structure your team: in-house or outsourced?**



I decided to assemble an outsourced team of specialists to provide all of the functions that make running a private investment office possible. I believe this approach is cheaper, more flexible, and allows me to leverage the best in each field rather than attempt to train in-house staff. I ran several parallel selection processes for advisors ranging from admin functions such as tax, custody, and reporting software, to, of course, the investment consultants. I had an independent advisor coordinate these searches and ensure that all the firms selected were aligned with my values and mission.

I started with the liquid part of the asset allocation and appointed two outsourced CIOs (chief investment officers). One selects actively managed funds that invest in companies whose products and services help solve social and environmental problems. The other implements a passively managed strategy that applies highly customized ESG filters to a wider investment universe, and layers engagement via proxy voting and participation in shareholder resolutions. The latter is important to me since with the public side of the portfolio, my impact is primarily generated through active ownership activities.

The rest of my portfolio is private. In fact, around half of my funds are private market investments, as this is where I can have the most impact by providing additional and often flexible capital.

**Q. How did you come to such a large private market allocation?**



I would say that such a high allocation to private markets is sadly very unusual even for other people like me, i.e. of relatively young age and ample financial means. By remaining too liquid and risk-averse, too many investors sacrifice opportunities to maximize their impact, and I was in that camp until recently.

With the third CIO I appointed, however, I undertook a process of detailed financial planning which allowed me to gain the confidence to make bolder choices in terms of risk. I ended up planning my finances with a lot of buffer that would allow me to live knowing that all my family's needs would be met even if I lived until the age of 105.

**The idea behind such detailed financial planning has been to understand the cash flows that I really need, isolate that amount in very conservative assets, and take on more risk and illiquidity with the rest of the investments and philanthropy, with the goal of maximizing my impact across the two over the course of my lifetime. These findings now inform my investment policy statement and my strategic asset allocation.**

**Q. Would you say that your direct deals have been both high impact and high risk?**



Not necessarily. High impact doesn't always equate to high risk, especially on the real asset side. Think about investing in forestry, for instance. To generate strong impact, I always compare the investment universe to a benchmark. For example, how many tons of CO2 per dollar invested can I contribute to sequester from the atmosphere by investing in this sustainable forest, versus donating the same amount to a charity that plants trees? Thanks to some very thoughtful advisors, I can now explicitly model these calculations and make more informed choices about the expected impact of an investment vis-à-vis its risk and return profile.

Of course, quantitative metrics are only a part of the impact measurement process. I also spend a lot of time evaluating qualitative criteria such as, for example, geography: could more impact per dollar be achieved in developing countries? How does that stack up against higher investment risk, but also higher social or human rights impact risks? Again, in my due diligence process I try to make all the assumptions as explicit as possible, so as to enable meaningful comparison with other opportunities.

**Q. Any tips on the measurement and reporting of impact for other families wishing to invest sustainably?**



I have adopted the Impact Management Project's (IMP) Impact Classification System (ICS), a digital tool which aims to make the social and environmental impact of investments more transparent and easier to analyze.

**I would encourage other families to use this tool, not only because it is free.**

**It has allowed me to better question the investment methodology of fund managers while encouraging them to think more holistically and in-depth about the social and environmental impact of their investments.**

<sup>19</sup> <https://www.impactalliance.co.uk>

# Implementing your strategy

## 2.1. Constructing a sustainable and impact portfolio

When constructing their portfolio, family offices can choose from a vast range of sustainable and impact funds as well as direct investments across asset classes. Over the past decade, thousands of new funds have been launched. There has also been considerable growth in impact-driven sectors, such as climate innovation, food and agriculture, healthcare, and education technology, which make impact investments more accessible.

It is now possible to construct a portfolio using only sustainable and impact vehicles across most asset classes, working with fund managers with strong track records and experienced teams. New products, such as climate-focused hedge funds and “green” gold, have also emerged.

Despite certain gaps – namely in commodities as well as in regions and markets that lack depth in sustainable investment products – many institution-quality strategies today can replicate traditional investment products in a more sustainable, impact-generating way.

While many families would like to create as much positive impact as possible, it is important to recognize that not everything in a diversified investment portfolio can follow a high-impact strategy. Impact investments, which are mostly found in private market alternative asset classes, are likely to represent the smaller, illiquid proportion of the portfolios of most family offices. Exclusions, ESG integration, and sustainable thematic approaches all have a role to play in constructing a well-diversified sustainable and impact portfolio.

For families wishing to build a sustainable portfolio, the chart below provides an overview of the opportunities across asset classes and the diverse approaches to sustainable and impact investing.

Family offices with different preferences or portfolio allocations can now access sustainable versions of traditional investments to fulfill the following goals:

### Higher return allocation

Families seeking higher-return strategies can deploy capital into:

- High-conviction ESG integration equities
- Engagement equities (often small-cap)
- Sustainable thematic equities, with a focus on specific high-conviction themes
- Impact private equity and venture capital
- Climate-focused and ESG hedge funds

### Lower risk allocation

Those looking for lower-risk investments can focus on:

- Fixed income climate-aligned and ESG strategies bonds and bond funds
- Green and transition bonds
- Lower-risk illiquid alternatives, such as impact private debt and de-risked green infrastructure
- Green property

### High liquidity allocation

Those with liquidity needs have a vast choice of strategies:

- Sustainable equities and fixed income funds, which now form the bulk of the sustainable investment market and offer daily liquidity (with certain strategies, e.g. open-ended green real estate and hedge funds, semi-liquid, and microfinance, a high-impact private debt strategy, often offering weekly or monthly liquidity)
- High-impact liquid strategies deploying in shareholder engagement and activism

### High impact allocation

Family offices wishing to create maximum impact would typically focus on:

- Illiquid alternatives such as impact private equity/debt, venture capital, green real estate, and infrastructure. And within these private market investments, the earlier stage the companies, or the more challenging the investment environment (for example, in frontier markets), the more likely it is to be impactful
- Equity funds that undertake robust shareholder engagement or activism

For more information on how to construct a sustainable and impact portfolio with a low-carbon focus, please see our publication: **The decarbonizing portfolio**<sup>12</sup>

<sup>12</sup><https://www.credit-suisse.com/microsites/decarbonizingyourportfolio/en.html>

# Asset allocation building blocks for a sustainable portfolio

## Equity

- 1 Sustainable single stock portfolio
- 2 ESG integration equities
- 3 Sustainable thematic equities
- 4 Engagement equities

## Fixed income

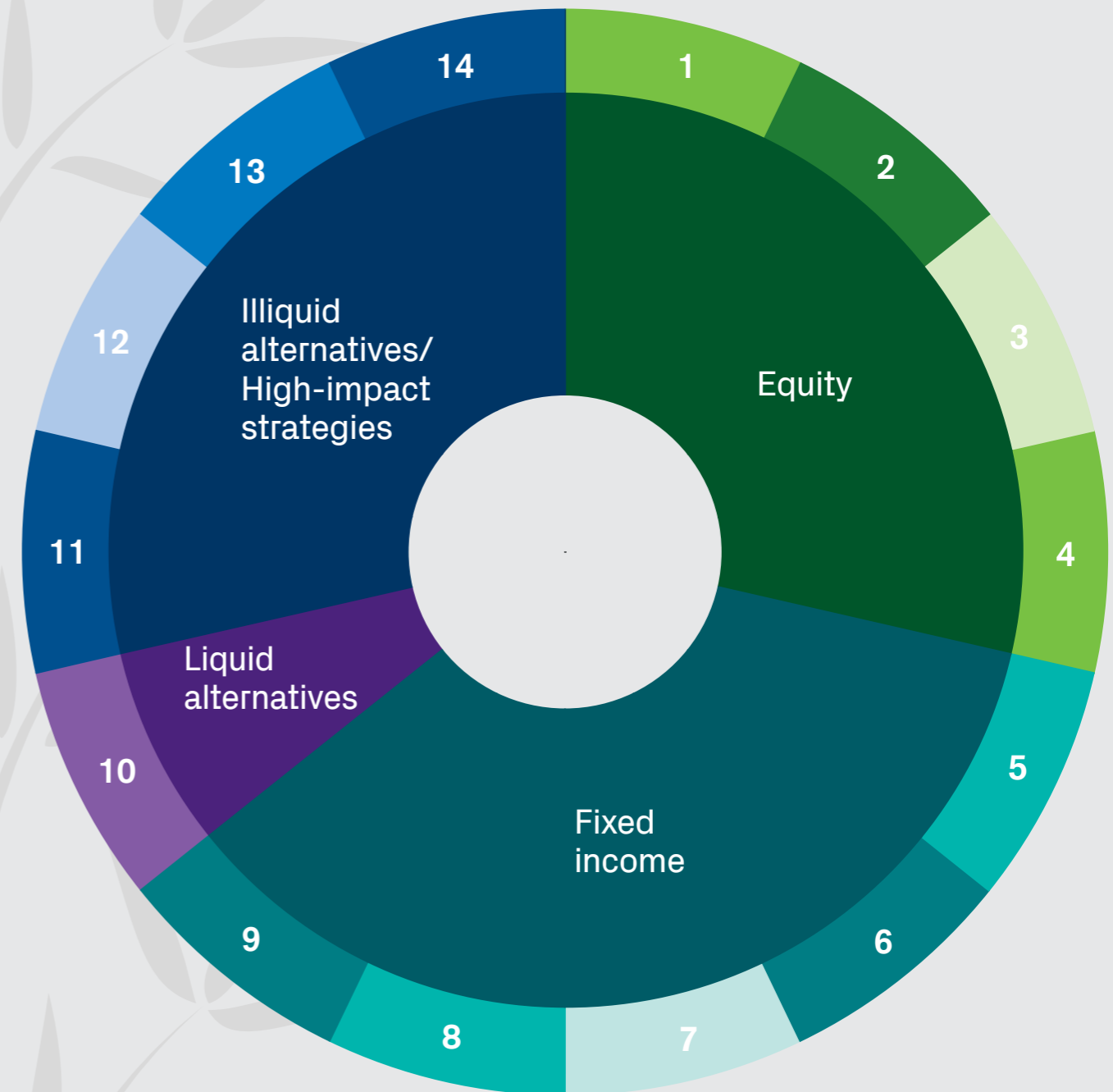
- 5 Sustainable single bond portfolio
- 6 Green and transition bonds
- 7 Development bank bonds
- 8 ESG investment grade corporate bonds
- 9 ESG high yield corporate bonds

## Liquid alternatives

- 10 ESG hedge funds

## Illiquid alternatives/High-impact strategies

- 11 Impact private equity and venture capital
- 12 Green infrastructure
- 13 Green real estate
- 14 Impact private debt



## 2.2. Active ownership: engagement and voting

While public markets provide an important exit route for private companies, most public market investing represents a change of ownership from one shareholder to another, without additional capital going into the company to generate measurable impact. However, there is a mechanism of direct impact in public markets – active ownership – which includes an array of activities undertaken during the investment period to generate additional impact, such as:

- Participating on boards and driving an impact agenda
- Pursuing shareholder engagement and activism on sustainability issues
- Providing technical assistance and strategic advice
- Enhancing access to networks
- Supporting management in sourcing senior hires
- Assisting with fundraising
- Helping a company enhance its overall sustainability or impact performance

In private markets, fund managers can leverage their considerable influence to enhance the sustainability and impact performance of investee companies. In cases where the fund takes a significant share of a company's equity, fund managers can set clear requirements for a company to meet ESG and impact goals, and further encourage and monitor these practices through participation on boards.

In liquid markets, shareholder engagement and activism – through the filing of shareholder proposals at a company's annual general meeting – can be a powerful strategy to generate impact on sustainability performance.

Family offices seeking impact should select fund managers that have robust shareholder engagement programs and vote their shares in support of sustainability-focused shareholder proposals. They should also ensure that fund managers set clear milestones for their engagements with companies and report their progress on a regular basis.

In 2021, proponents filed at least 435 shareholder resolutions on environmental, social, and sustainability issues. Some of the most important issues for investors include corporate political activity, workplace diversity, and climate change.<sup>13</sup>

While dozens of shareholder resolutions have resulted in majority votes in 2021, any vote above 15 or 20% sends a strong signal to company management that there is considerable shareholder concern about the issue under debate. For that reason, it is important that family offices ensure all their direct holdings of stocks are voted when shareholder proposals call for improved corporate sustainability performance.

This type of activism can be highly impactful. For example, a small improvement in the procurement policy of a large multinational company could deliver substantial positive impact on the global level. In some cases, this could generate much larger impact than what would be achieved through many small private market impact investments.

Family offices often have substantial direct holdings of listed equities that are not managed through fund strategies. Today, it is possible to work with banks and custodians to vote these shares in line with a family's sustainability expectations.

---

See case study with **Giorgiana Notarbartolo**. Page 42

---

## 2.3. Collaborating to create impact

Family offices are well known for collaborating and sharing deal flow within private networks. This is no different when it comes to sustainable and impact investing. The growth in family office assets and in their interest in impact investing has resulted in a growing number of collaborative networks.

These emerging networks include<sup>14</sup>:

- **The ImPact:** is a membership community of family offices committed to aligning their assets with their values, particularly at the high-impact end of the spectrum. Their publications offer guidance and case studies of family offices' sustainable and impact investments across a range of asset classes
- **The Global Impact Investing Network (GIIN):** is an impact investing industry association which aims to reduce the barriers to impact investing and offers a comprehensive library of resources for impact investors

- **Toniic:** is a community of around 500 individuals, family offices, and foundations that share deal flow and expertise
- **Pymwymic:** is an impact investment collaboration of families focusing on impact-driven investment opportunities
- **The CREO Syndicate:** is a network of family offices and wealth owners with a mission to address some of the most pressing environmental challenges of our time by catalyzing private capital into innovative solutions to protect and preserve the environment

Joining these networks can be a good way for a family office to learn about sustainable and impact investing, and work with other like-minded families to share due diligence, experience, and deal flow.

## 2.4. Building an impact team

Family offices can leverage a spectrum of in-house staff, external consultants, wealth managers, and fund managers to deliver their sustainable and impact investing strategies. Capabilities are often built over time, starting with portfolios at banks or wealth managers that are transitioned to more sustainable strategies. External consultants and boutique specialists would then be brought in to fulfill additional needs. Finally, if there is clear, long-term demand, in-house capabilities would be built up within the family office. Many of these decisions are driven by the types of investments the family wishes to make, and by the teams and advisors best suited to execute and manage these investments.

One family office started using a wealth manager that provided access to sustainable funds in liquid markets and private market impact funds each year. After investing in funds for a number of years, the family decided to focus on direct investments in African renewable energy companies.

They hired a specialist to execute these direct deals while retaining the wealth manager for the fund investments, both liquid and illiquid.

Of note, it is important to assess the degree to which family members want to be involved. Implementing sustainable and impact investing strategies can provide an important platform for family members to build their own investing capabilities in established and new domains. In addition, non-finance-oriented members of the family can take on the important role of evaluating and monitoring the impact dimension of the investments.

---

For more information on how to build an impact investing team, see: Omidyar Network: Building an Impact Investing Team<sup>15</sup>

---

<sup>13</sup> <https://www.proxypreview.org>

<sup>14</sup> <https://www.theimpact.org> | <https://thegiin.org> | <https://toniic.com> | <https://pymwymic.com> | <https://creosyndicate.org>

<sup>15</sup> <https://omidyar.com/building-an-impact-investing-team>

## 2.5. Measurement and reporting of impact investments

The measurement and reporting of impact from investments is still in its early stages. This is a fast-growing and increasingly complex area of specialization, and the references below are an excellent starting point for family offices to explore.

While financial due diligence can normally be performed by family office investment professionals, impact assessment is a new competency that currently sits at the fund or wealth manager level. Over time, however, these capabilities can be brought into the family office by new staff members, consultants, and sometimes family members.

When investing directly in companies, investors should seek reliable measurement and impact reporting based on widely adopted frameworks and indicator sets, such as IRIS+<sup>16</sup> and the Impact Management Project (IMP).<sup>17</sup>

The Impact Management Project has defined five dimensions of impact which are now used across the impact investing industry. These dimensions can also help families develop their thematic preferences and the global issues they would like to address through their investments.

Fund managers should also monitor and report on the impact not only of their capital allocation and active ownership contributions, but also of the underlying investee companies. This is not easy, and to date, few fund managers are doing this at the required level. This is because at the core of reporting on investor contribution and impact lies the assessment of additionality. In effect, improvement across various sustainability and impact metrics – or the growth of an impact-generating company’s business – may stem from different factors. As a result, it can be difficult to identify the proportion of impact that can be attributed to the investor or investment.

- 1. A clear articulation of the theory of change**
- 2. Evidence/an explanation of how their investment or active ownership activities are generating impact**
- 3. Transparency around the execution of the strategy to ensure accountability for the impact claims being made**

While it can be challenging to evaluate and report on the contribution of the capital allocation and active ownership by a fund manager or investor, it is critical to do so. All industry participants should be open about what they are doing or not doing to generate outcomes that will help solve the challenges facing humanity.

See **The double delta of impact investing: Credit Suisse**<sup>18</sup> for an exploration of impact from a fund allocator perspective.

### The IMP evaluates impact across five dimensions:

Impact dimension	Impact questions each dimension seeks to answer
<b>What</b>	<ul style="list-style-type: none"> <li>▪ What outcome occurs in the period?</li> <li>▪ How important is the outcome to the people (or planet) experiencing it?</li> </ul>
<b>Who</b>	<ul style="list-style-type: none"> <li>▪ Who experiences the outcome?</li> <li>▪ How underserved are the affected stakeholders in relation to the outcome?</li> </ul>
<b>How much</b>	<ul style="list-style-type: none"> <li>▪ How much of the outcome occurs - across scale, depth, and duration?</li> </ul>
<b>Contribution</b>	<ul style="list-style-type: none"> <li>▪ Would this change likely have happened anyway?</li> </ul>
<b>Risk</b>	<ul style="list-style-type: none"> <li>▪ What is the risk to people and planet if the impact does not occur as expected?</li> </ul>

Source: Impact Management Project

<sup>16</sup> <https://iris.thegiin.org>

<sup>17</sup> <https://impactmanagementproject.com>

<sup>18</sup> <https://www.credit-suisse.com/media/assets/microsite/docs/responsibleinvesting/the-double-delta-of-impact-investing.pdf>

# Case study



Giordiana Notarbartolo

**We spoke to Giordiana Notarbartolo, an impact investor and member of a family office that manages the wealth of a branch of the Marzotto family.**

**Q. How did you move into sustainable and impact investing?**

Our family office was born out of a branch of the Marzotto family, which made its fortune in textiles and fashion. Most notably, my family owned the Valentino Fashion Group (VFG), which included a number of luxury fashion brands, including Hugo Boss and Valentino. VFG was partially sold in the early 2000s, and this marked the beginning of our transition from an industrial to a financial entity.

In 2015, there was a generational transition within our family office, with my brother becoming further involved in the day-to-day, and leading our family office to its current state. Around the same time, I had discovered impact investing and decided to invest my time and energy in this direction, including engaging with my family on the topic. In the beginning, it was not easy. I would say that they did not fully grasp the investment viability of these approaches and how they can be integrated into the family's investments.

**In 2016, at one of the Marzotto extended family annual gatherings, I presented the case for impact investing and what I had been researching on the topic. A year later, my uncle suggested we start to integrate ESG considerations into our public equity portfolio.**

At the time, around 98% of our investments were in single stocks. So this ESG integration process was our first step in aligning our investments with our values.

**Q. What was your next step in terms of creating impact?**

Given the large proportion of our investments in single stocks, the natural next step was voting these shares in a sustainable way at company AGMs. For me, once you have analyzed your portfolio and considered what you are invested in, voting should come next. Since I work in impact investing, I knew that voting in favor of sustainable shareholder proposals is considered best practice. I see it as the right way to move from just applying ESG considerations towards generating impact within public equities.

**Q. Did you face any challenges when implementing your voting strategy?**

Things are now working but at the beginning, this was not the case. There were a number of hurdles along the way, especially around trust, workload, and cost. One of those challenges was different systems in different countries. A large part of my impact investing network is in the US, where a strong culture of (sustainable) voting exists – more so than in Europe, where there is no such culture of voting, nor the systems to allow it. We struggled to set up proxy voting for our shares, and in particular for the Italian ones, as the custodian bank did not allow for the separation of accounts. We probably exchanged around 50 emails with all our banks to figure out how we could vote. At the time, it seemed like no one really knew where to start.

As with any new initiative in an organization, we had to work through many challenges: Who will do it? How much time will it take? How expensive will it be? One of the greatest challenges was that we had a small team and over 100 ballots. As such, identifying someone we could trust to act as a proxy to vote on our behalf was very important to us.

**The entire process was kicked off in 2019 and I only really started to vote properly in 2021.**

**Q. Do you work with your proxy advisor closely?**

Luckily for us, we managed to find a proxy advisor who really met our needs, giving us the attention and support we required. We definitely trust him to make voting recommendations. While we do review the votes, there is only one position that is very significant in our portfolio where our family gives an indication on how to vote.

**Everywhere else, we know how our advisor approaches voting and we trust his recommendations.**

**Q. Do you have any advice for other families?**

I would say that the impact generated outweighs any cost. While we struggled to overcome a number of challenges in the beginning, we feel there is a strong potential for impact through voting, and it is not a huge investment. There are moral responsibilities tied to how we invest our money and it is not all about ESG and sustainable investing, but also about helping companies to improve. You can invest in the "worst" companies and create a positive impact by supporting the shareholder proposals filed by other shareholders calling for improvement in sustainability performance.

**Nowadays, many banks offer a basic proxy voting service for large clients. I would say that any form of voting is better than not voting. Therefore, making the most of what is offered by your existing financial institutions could be a good option for many clients.**

**The level of impact you can achieve with proxy voting without doing anything else is phenomenal.**

# Conclusion

Sustainable and impact investing have come a long way in recent years. Since the term was coined in 2007, impact investing has become an increasingly vital tool for family offices to align the family's values and aspirations with the behavior of their capital in the capital markets.

Despite their enthusiasm for impact investing, family offices still face many challenges. Impact investing is often carried out ad hoc, unintegrated in the family's core investment strategy. In addition, confusion lingers around the terminology and range of approaches, potential for financial returns, alignment between families and their advisory ecosystem, impact measurement, and the best way to develop investment strategies.

We hope this guide has provided clarity on this dynamic field of investment – and that it continues to be useful to any family office embarking on a meaningful impact investing journey, which we are convinced can deliver returns to families and society as a whole.

# Imprint

**Lead author**  
James Gifford

**Additional author**  
Richard Bettermann

**Contributor**  
Helen McDonald

**Project management**  
Caroline Bachar

**Publication date**  
November 2021

**Design**  
LINE Communications AG

# Important information

The information provided herein constitutes marketing material. It is not investment advice or otherwise based on a consideration of the personal circumstances of the addressee nor is it the result of objective or independent research. The information provided herein is not legally binding and it does not constitute an offer or invitation to enter into any type of financial transaction. The information provided herein was produced by Credit Suisse Group AG and/or its affiliates (hereafter "CS") with the greatest of care and to the best of its knowledge and belief. The information and views expressed herein are those of CS at the time of writing and are subject to change at any time without notice. They are derived from sources believed to be reliable. CS provides no guarantee with regard to the content and completeness of the information and where legally possible does not accept any liability for losses that might arise from making use of the information. If nothing is indicated to the contrary, all figures are unaudited. The information provided herein is for the exclusive use of the recipient. Neither this information nor any copy thereof may be sent, taken into or distributed in the United States or to any U. S. person (within the meaning of Regulation S under the US Securities Act of 1933, as amended). It may not be reproduced, either in part or in full, without the written permission of CS. Except as otherwise specified herein, this report is distributed by Credit Suisse AG, a Swiss bank, authorized and regulated by the Swiss Financial Market Supervisory Authority.

**Germany:** Important Information for Investors in Germany: The information and views expressed herein are those of CS at the time of writing and are subject to change at any time without notice. They are derived from sources believed to be reliable. CS provides no guarantee with regard to the content and completeness of the information. If nothing is indicated to the contrary, all figures are unaudited. The information provided herein is for the exclusive use of the recipient.

**South Africa:** The legal entities Credit Suisse AG (FSP number 9788) and Credit Suisse UK (FSP number 48779) are registered as financial services providers with the Financial Sector Conduct Authority in South Africa.

**United Kingdom:** This material is distributed by Credit Suisse (UK) Limited. Credit Suisse (UK) Limited, is authorized by the Prudential Regulation Authority and regulated by the Financial Conduct Authority and the Prudential Regulation Authority. Where this material is distributed into the United Kingdom by an offshore entity not exempted under the Financial Services and Markets Act 2000 (Financial Promotion) Order 2005 the following will apply: To the extent communicated in the United Kingdom ("UK") or capable of having an effect in the UK, this document constitutes a financial promotion which has been approved by Credit Suisse (UK) Limited which is authorized by the Prudential Regulation Authority and regulated by the Financial Conduct Authority and the Prudential Regulation Authority for the conduct of investment business in the UK. The registered address of Credit Suisse (UK) Limited is Five Cabot Square, London, E14 4QR. Please note that the rules under the UK's Financial Services and Markets Act 2000 relating to the protection of retail clients will not be applicable to you and that any potential compensation made available to "eligible claimants" under the UK's Financial Services Compensation Scheme will also not be available to you. Tax treatment depends on the individual circumstances of each client and may be subject to changes in future.

**France:** This document can only be offered to professional clients. When distributed in France, this is distributed by Credit Suisse (LUXEMBOURG) S.A., Succursale en France (the "France branch"), which is a branch of Credit Suisse (Luxembourg) S.A., a duly authorized credit institution in the Grand Duchy of Luxembourg with registered address 5, rue Jean Monnet, L-2180 Luxembourg. The France branch is subject to the prudential supervision of the Luxembourg supervisory authority, the Commission de Surveillance du Secteur Financier (CSSF), 283, route d'Arlon, L-1150 Luxembourg, Grand Duchy of Luxembourg and is further authorized and regulated in France by the Autorité de Contrôle Prudentiel et de Résolution (ACPR) and the Autorité des Marchés Financiers (AMF). The information provided herein constitutes marketing material. It is not investment advice or otherwise based on a consideration of the personal circumstances of the addressee nor is it the result of objective or independent research. The information provided herein is not legally binding and it does not constitute an offer or invitation to enter into any type of financial transaction. The information provided herein was produced by Credit Suisse Group AG and/or its affiliates (hereafter "CS") with the greatest of care and to the best of its knowledge and belief. The information and views expressed herein are those of CS at the time of writing and are subject to change at any time without notice. They are derived from sources believed to be reliable. CS provides no guarantee with regard to the content and completeness of the information and where legally possible does not accept any liability for losses that might arise from making use of the information. If nothing is indicated to the contrary, all figures are unaudited. The information provided herein is for the exclusive use of the recipient. The recipient is in particular recommended to check that the information provided is in line with his/her own circumstances with regard to any legal, regulatory, tax or other consequences, if necessary with the help of an external professional advisor. This document is not intended for person who, due to their nationality or place of residence, are not permitted to receive such information under local law. Neither this information nor any copy thereof may be sent, taken into or distributed in the United States or to any U. S. person (within the meaning of Regulation S under the US Securities Act of 1933, as amended). It may not be reproduced, either in part or in full, without the written permission of CS.

**Luxembourg:** This document is distributed by CREDIT SUISSE (LUXEMBOURG) S.A., which is authorized as a credit institution in the Grand Duchy of Luxembourg and under the prudential supervision of the Luxembourg supervisory authority of the financial sector, the Commission de Surveillance du Secteur Financier (CSSF), 283, route d'Arlon, L-1150 and part of the Credit Suisse group. CREDIT SUISSE (LUXEMBOURG) S.A. was not involved in the production of this document. CREDIT SUISSE (LUXEMBOURG) S.A. provides no guarantee with regard to its content and completeness and does not accept any liability for losses which might arise from making use of this information. This document constitutes marketing material. It does not constitute an offer or a recommendation to buy or sell financial instruments or banking services and does not release the recipient from exercising his/her own judgment taking into consideration, among others, his/her financial situation, his/her knowledge and experience in banking/investment services, financial instruments and financial markets and his/her investment objectives. This document is addressed to the recipient on the basis of the recipient's explicit request. This document is for the exclusive use of the recipient. Any use of this information by the recipient is under the sole responsibility of the recipient. This document may not be reproduced or disseminated either in part or in full without the written permission of CREDIT SUISSE (LUXEMBOURG) S.A.. This document is not intended for persons who, due to their nationality or place of residence, are not permitted to receive such information under local law. Neither this document nor any copy thereof may be sent, taken into or distributed in the United States or to any US person (within the meaning of Regulation S under the US Securities Act of 1933, as amended) This applies equally to other jurisdictions, unless such actions are performed in compliance with the applicable laws of such jurisdiction.

**Netherlands:** This document is distributed by CREDIT SUISSE (LUXEMBOURG) S.A., Netherlands Branch, a branch of CREDIT SUISSE (LUXEMBOURG) S.A., a duly authorized credit institution in the Grand Duchy of Luxembourg with address 5, rue Jean Monnet, L-2180 Luxembourg, registered as a bank with the Commission de Surveillance du Secteur Financier, and part of the Credit Suisse group. This document has been prepared by Credit Suisse AG. CREDIT SUISSE (LUXEMBOURG) S.A., Netherlands Branch was not involved in the production of this document. CREDIT SUISSE (LUXEMBOURG) S.A., Netherlands Branch provides no guarantee with regard to its content and completeness and does not accept any liability for losses which might arise from making use of this information. This document constitutes marketing material. It does not constitute investment research. It has not been prepared in accordance with legal requirements designed to promote the independence of investment research and it is not subject to any prohibition on dealing ahead of the dissemination of investment research. This document is intended only to provide general and preliminary information and shall not be construed as the basis for any investment decision nor as an offer or a solicitation to conclude a transaction in financial instruments or to subscribe to banking services. The liability of CREDIT SUISSE (LUXEMBOURG) S.A., Netherlands Branch may not be engaged as regards any investment, divestment or retention decision taken by an investor/recipient on the basis of this document. Each investor/recipient shall make his/her own appraisal of the tax, legal, accounting and other financial merits and risks of his/her investment regardless of the opinion expressed in the document. The investor bears all the risks of losses in connection with his/her investment. This document shall not be construed as a personal recommendation as regards the financial instruments/investment strategies mentioned in the material. This document does not constitute an investment advice, it does not take into account the recipient's economic situation, his/her current assets or liabilities, his/her knowledge and experience in financial instruments and markets, his/her investment purposes, investment horizon, risk profile and preferences. This document is addressed to the recipient on the basis of the recipient's explicit request. This document is for the exclusive use of the recipient. Any use of this information by the recipient is under the sole responsibility of the recipient. This document may not be reproduced or disseminated either in part or in full without the written permission of CREDIT SUISSE (LUXEMBOURG) S.A., Netherlands Branch. This document is not intended for persons who, due to their nationality or place of residence, are not permitted to receive such information under local law. Neither this document nor any copy thereof may be sent, taken into or distributed in the United States or to any US person (within the meaning of Regulation S under the US Securities Act of 1933, as amended). This applies equally to other jurisdictions, unless such actions are performed in compliance with the applicable laws of such jurisdiction.

**Portugal:** This marketing material is distributed in Portugal by CREDIT SUISSE (LUXEMBOURG) S.A., Sucursal Portugal who is an investment service provider authorized and regulated by the Comissão do Mercado dos Valores Mobiliários (the "CMVM") and the Bank of Portugal ("BoP").

**Russia:** The material can only be distributed to qualified investors. This communication/document was prepared by Joint Stock Company "Bank Credit Suisse (Moscow)" (the "Bank"), a bank and a professional participant of the securities market licensed by the Bank of Russia, and/or by Credit Suisse AG and/or its affiliates and contains or may contain information about offerings and/or services of Credit Suisse AG and/or its affiliates. This communication/document is provided to you for information purposes only and does not constitute advertising, valuation, investment advice or individual investment advice, offer of financial investment(s) as defined in NAUFOR Internal Standard on offering financial instruments to individuals and does not contain a recommenda-



tion to buy or sell any securities, derivatives or any other financial instruments, banking or any other services. This communication/document does not constitute an offer, as defined in Article 435 of the Civil Code of the Russian Federation, or commitment of an offer. The financial instruments or transactions mentioned in this communication may not suit your investment profile or investment goals/expectations. It is your responsibility to determine whether a financial instrument or transaction suits your investment goals, investment horizon or risk tolerance. The Bank shall not be liable for potential losses in case of making transactions or investing in financial instruments mentioned in this information and does not recommend using solely this information when making an investment decision. This communication/document contains information on securities, derivatives and other financial instruments designed for qualified investors recognized as such by operation of law or in accordance with the procedure set by applicable Russian law. This communication/document is only addressed to and directed at qualified investors. In cases stipulated by applicable law, any securities, derivatives or any other financial instruments designed for qualified investors may be purchased by you only if you are recognized as a qualified investor. This communication/document was prepared by the Bank or its affiliates with the greatest of care and to the best of their knowledge and belief. However, the Bank provides no guarantee with regard to the content and completeness of the information and does not accept any liability for losses that might arise from making use of the information. The views expressed herein are those of the Bank or its affiliates at the time of writing and are subject to change at any time without notice. Unless stated otherwise, all figures in this communication/document are unaudited. Any sale or purchase of securities, derivatives or any other financial instruments described herein shall be considered subject to (i) the terms and conditions of the definitive transaction documents, (ii) additional approvals, disclosure and consents required by the Bank and/or applicable law. The securities, derivatives or any other financial instruments, banking or any other services mentioned in this communication/document may be unsuitable for the recipient. Specifically, the recipient should determine if the information provided herein suits his/her particular circumstances in the context of legal, regulatory, tax and other implications (if necessary, with professional advisers). Every investment involves risk, especially with regard to fluctuations in value and return. Historical returns and financial market scenarios are no guarantee of current or future performance. Investments in foreign currencies involve the additional risk that the foreign currency might lose value against the investor's reference currency. Performance indications do not consider commissions levied at subscription and/or redemption. This communication/document is not intended for persons who, due to their nationality, place of registration, residence or stay, are not permitted access to such information under applicable law. Neither this document nor any copy thereof may be sent, taken into or distributed in the United States or to any U. S. person (within the meaning of Regulation S under the US Securities Act of 1933, as amended). The content of this communication/document is protected by copyright. This document may not be reproduced, transmitted (electronically or otherwise), modified or used for public or commercial purposes, either in part or in full, without a prior written consent of the Bank. Copyright © 2021 JSC Bank Credit Suisse (Moscow) and/or affiliates. All rights reserved.

**Italy:** This document was produced by Credit Suisse with the greatest of care and to the best of its knowledge and belief. However Credit Suisse provides no guarantee with regard to its content and completeness and does where legally possible not accept any liability for losses which might arise from making use of this information. The opinions expressed in this document are those of Credit Suisse at the time of writing and are subject to change at any time without notice. If nothing is indicated to the contrary, all figures are not audited. This document is provided for information purposes only and is for the exclusive use of the recipient. It does not constitute an offer or a recommendation to buy or sell financial instruments or banking services and does not release the recipient from exercising his/her own judgment. Financial instruments mentioned in this document could be considered complex products and therefore may not be suitable for retail clients. The recipient is in particular recommended to check that the information provided is in line with his/her own circumstances with regard to any legal, regulatory, tax or other consequences, if necessary with the help of a professional advisor. This document may not be reproduced either in part or in full without the written permission of Credit Suisse. It is expressly not intended for persons who, due to their nationality or place of residence, are not permitted access to such information under local law. Every investment involves risk, especially with regard to fluctuations in value and return. Investments in foreign currencies involve the additional risk that the foreign currency might lose value against the investor's reference currency. Historical performance indications and financial market scenarios are no reliable indicators of current or future performance. Performance indications do not consider commissions levied at subscription and/or redemption. Furthermore, no guarantee can be given that the performance of the benchmark will be reached or outperformed. PERFORMANCE OBTAINED IN THE PAST DOES NOT CONSTITUTE ANY WARRANTY FOR FUTURE. BEFORE THE SUBSCRIPTIONS READ THE PROSPECTUS. Neither this document nor any copy thereof may be sent, taken into or distributed in the United States or to any U. S. person (within the meaning of Regulation S under the US Securities Act of 1933, as amended).

**Guernsey:** This document is provided to you for your information and discussion only. It is not a solicitation or an offer to buy or sell any security or other financial instrument. Any information including facts, opinions or

quotations, may be condensed or summarised and is expressed as of the date of writing. The information may change without notice and Credit Suisse AG, Guernsey Branch (hereafter "Credit Suisse") is under no obligation to ensure that such updates are brought to your attention. The price and value of investments mentioned and any income that might accrue could fall or rise or fluctuate. The price of shares and income from them may fall as well as rise and is not guaranteed. You may not get back the amount of your original investment. Please note that past performance is not a guide to future returns. This information is derived from sources provided by the fund manager. We believe it to be reliable but make no warranty as to its accuracy and completeness. If an investment is denominated in a currency other than your base currency, changes in the rate of exchange may have an adverse effect on value, price or income. This document and any related recommendations or strategies may not be suitable for you; you should ensure that you fully understand the potential risks and rewards and independently determine that it is suitable for you given your objectives, experience, financial resources and any other relevant circumstances. You should consult with such advisor(s) as you consider necessary to assist you in making these determinations. Nothing in this document constitutes investment, legal, accounting or tax advice, or a representation that any investment or strategy is suitable or appropriate to your individual circumstances, or otherwise constitutes a personal recommendation to you. Credit Suisse does not advise on the tax consequences of investments and you are advised to contact a tax advisor should you have any questions in this regard. The levels and basis of taxation are dependent on individual circumstances and are subject to change. This document may relate to investments or services of an entity/person outside Guernsey, or to other matters which are not regulated by the Guernsey Financial Services Commission, or in respect of which the protections of the Guernsey Financial Services Commission for retail clients and/or the Guernsey Banking Deposit Compensation Scheme may not be available. Further details as to where this may be the case are available on request in respect of this document. This document has been prepared from sources Credit Suisse believes to be reliable but we do not guarantee its accuracy or completeness and do not accept liability for any loss arising from its use. Credit Suisse reserves the right to remedy any errors that may be present in this document. Credit Suisse, its affiliates and/or their employees may have a position or holding, or other material interest or effect transactions in any securities mentioned or options thereon, or other investments related thereto and from time to time may add to or dispose of such investments. Credit Suisse may be providing, or have provided within the previous 12 months, significant advice or investment services in relation to the investment concerned or a related investment to any company or issuer mentioned. Some investments referred to in this document will be offered by a single entity or an associate of Credit Suisse, may be the only market maker in such investments. This document is intended only for the person to whom it is issued by Credit Suisse. It may not be reproduced either in whole, or in part, without our written permission. The distribution of this document and the offer and sale of the investment in certain jurisdictions may be forbidden or restricted by law or regulation. Investments may have no public market or only a restricted secondary market. Where a secondary market exists, it is not possible to predict the price at which investments will trade in the market or whether such market will be liquid or illiquid. As such, for investments not listed or traded on any exchange, pricing information may be more difficult to obtain and the liquidity of the investments may be adversely affected. A holder may be able to realise value prior to an investment's maturity date only at a price in an available secondary market. The issuer of the investment may have entered into contracts with third parties to create the indicated returns and/or any applicable capital protection (in part or in full). In the event of default by the issuer of the investment, and/or any third party the investment any income derived from such contracts is not guaranteed and you may get back none of, or less than, what was originally invested. Any capital protection given is usually an inherent part of the product; provided through the use of options, futures or other derivative products. You may have to accept smaller returns on an investment relative to a direct investment in the underlying index, basket, etc. because of the costs involved in providing the capital protection. Such capital protection normally only applies if the investment is held until maturity. The amount of initial capital to be repaid may be geared, which means that a fall in the underlying index or securities may result in a larger reduction in the amount repaid to investors. Where this document relates to emerging markets, such investments should be made only by sophisticated investors or experienced professionals, who have independent knowledge of the relevant markets, are able to consider and weigh the various risks presented by such investments, and have the financial resources necessary to bear the substantial risk of loss of investment in such investments. Credit Suisse AG, Guernsey Branch is a branch of Credit Suisse AG, which is incorporated in the Canton of Zurich, Switzerland. The principal place of business in Guernsey of Credit Suisse AG, Guernsey Branch is: Helvetia Court, Les Echelons, South Esplanade, St Peter Port, Guernsey GY1 3YJ. Credit Suisse AG, Guernsey Branch is licensed under The Banking Supervision (Bailiwick of Guernsey) Law, 1994, as amended, the Protection of Investors (Bailiwick of Guernsey) Law, 1987, as amended, and is regulated by the Guernsey Financial Services Commission. Copies of the latest audited accounts are available on request.

**DIFC:** This information is being distributed by Credit Suisse AG (DIFC Branch), duly licensed and regulated by the Dubai Financial Services Authority ("DFSA"). Related financial services or products are only made available to Professional Clients or Market Counterparties, as defined by the DFSA, and are not intended for any other

persons. Credit Suisse AG (DIFC Branch) is located on Level 9 East, The Gate Building, DIFC, Dubai, United Arab Emirates.

**Israel:** If distributed by Credit Suisse Financial Services (Israel) Ltd. in Israel: This document is distributed by Credit Suisse Financial Services (Israel) Ltd. Credit Suisse AG, including the services offered in Israel, is not supervised by the Supervisor of Banks at the Bank of Israel, but by the competent banking supervision authority in Switzerland. Credit Suisse Financial Services (Israel) Ltd. is a licensed investment marketer in Israel and thus, its investment marketing activities are supervised by the Israel Securities Authority.

**Singapore and Hong Kong:** For all, except accounts managed by relationship managers and/or investment consultants of Credit Suisse AG, Hong Kong Branch: This document was produced by and the opinions expressed herein are those of Credit Suisse AG ("Credit Suisse") as of the date of writing and are subject to change. It has been prepared solely for (i) information purposes, and (ii) the reference of the recipient. It does not constitute a request nor an offer or recommendation by or on behalf of Credit Suisse to any person to buy or sell any particular investment product or to participate in any other transactions. The only legally binding terms are to be found in the applicable product documentation or specific contracts and confirmations prepared by Credit Suisse. Any reference to past performance is not necessarily a guide to future performance. Although care has been taken to ensure that the information and analysis contained in this publication have been compiled or arrived at from sources believed to be reliable, Credit Suisse does not make any representation as to their accuracy, reliability and/or completeness and does not accept liability for any direct, indirect, incidental, specific or consequential loss and/or damage arising from the use of or reliance on this information. The information contained in this document is for general purposes and is not intended (and should not be construed) as legal, accounting, tax nor financial advice or opinion provided by Credit Suisse. It is recommended that you independently assess, with your professional advisors as you may deem appropriate, the specific financial risks as well as legal, accounting, tax and financial consequences. The product /service/transaction which is the subject of this document material may not be applicable or suitable for a client's specific circumstances or needs. For accounts managed by relationship managers and/or investment consultants of Credit Suisse AG, Hong Kong Branch: This document was produced by and the opinions expressed herein are those of Credit Suisse AG ("Credit Suisse") as of the date of writing and are subject to change. It has been prepared solely for (i) information purposes, and (ii) the reference of the recipient. It does not constitute a request or an offer by or on behalf of Credit Suisse to any person to buy or sell any particular investment product or to participate in any other transactions. The only legally binding terms are to be found in the applicable product documentation or specific contracts and confirmations prepared by Credit Suisse. Any reference to past performance is not necessarily a guide to future performance. Although care has been taken to ensure that the information and analysis contained in this publication have been compiled or arrived at from sources believed to be reliable, Credit Suisse does not make any representation as to their accuracy, reliability and/or completeness and does not accept liability for any direct, indirect, incidental, specific or consequential loss and/or damage arising from the use of or reliance on this information. The information contained in this document is for general purposes and is not intended (and should not be construed) as legal, accounting or tax advice or opinion provided by Credit Suisse. It is recommended that you independently assess, with your professional advisors as you may deem appropriate, the specific financial risks as well as legal, accounting, tax and financial consequences. The product /service/transaction which is the subject of this document material may not be applicable or appropriate for a client's specific circumstances or needs. For all: A Credit Suisse affiliate may have acted upon the information and analysis contained in this publication before being made available to clients of Credit Suisse. A Credit Suisse affiliate may, to the extent permitted by law, participate or invest in other financing transactions with the issuer of any securities referred to herein, perform services or solicit business from such issuers, and/or have a position or effect transactions in the securities or options thereof. Neither this document nor any copy may be sent to or taken into the United States (U.S.) or distributed in the U.S. or to any U.S. person (as defined in Regulation S under the U.S. Securities Act of 1933, as amended (the "Act")). Neither this document nor any copy may be sent to, taken into or distributed in any jurisdiction except in compliance with the applicable laws. Credit Suisse AG (Unique Entity Number in Singapore: S73FC2261L) is incorporated in Switzerland with limited liability. If you have any queries/objections relating to the receipt of marketing materials from us, please contact our Data Protection Officer at [dataprotectionofficer.pb@credit-suisse.com](mailto:dataprotectionofficer.pb@credit-suisse.com) (for Credit Suisse AG, Hong Kong Branch); [PDPO.SGD@credit-suisse.com](mailto:PDPO.SGD@credit-suisse.com) (for Credit Suisse AG, Singapore Branch) or [csau.privacyofficer@credit-suisse.com](mailto:csau.privacyofficer@credit-suisse.com) (for Credit Suisse AG, Sydney Branch). The entire contents of this document are protected by copyright law (all rights reserved). This document or any part thereof may not be reproduced, transmitted (electronically or otherwise), altered or used for public or commercial purposes, without the prior written permission of Credit Suisse.

**Brasil:** Credit Suisse is one of the largest providers of financial services in the world. Our strategy is based on the main fortes of Credit Suisse: its position in wealth management, its specialized investment banking capabilities and its strong presence in our original market, Switzerland. We seek to adopt a balanced focus on wealth management to take advantage of the large pool of wealth in mature markets and the significant expansion of

the high-income class in emerging markets, while we serve important developed markets with an emphasis on Switzerland. Credit Suisse employs over 47,000 people. The registered shares (CSGN) of Credit Suisse Group AG (parent corporation of Credit Suisse AG) are listed in Switzerland and, in the form of American Depositary Shares (CS), in New York. To find out more about Credit Suisse, go to [www.credit-suisse.com](http://www.credit-suisse.com). This material was drafted by Credit Suisse Group AG "Credit Suisse". This material is for information purposes only and does not contemplate investment objectives, financial condition, or individual and private needs and does not contain all information that a potential investor should consider or analyze before making an investment. It should not be construed as securities research, advertising and/or disclosure material, or solicitation of a purchase or sale, offer, or recommendation of any financial asset or investment. We advise clients to consult specialized professionals before deciding to invest in securities. The opinions stated herein by Credit Suisse may diverge from those of other entities. Credit Suisse Hedging-Griffo ("CSHG") will not be liable for clients' investment decisions on this matter or for any events or acts involving the specialized professionals they consult. This material must not be reproduced, copied, or distributed to third parties. This material does not constitute and should not be construed as any securities, legal, accounting, regulatory, or tax advice related to the matters dealt with herein. Clients should base their decisions solely on their own opinions and on the opinions of specialized professionals they may hire to issue opinions and decide on such matters. To the extent that these materials contain forward-looking statements, such statements will refer to future prospects, will be subject to a series of risks and uncertainties, and do not constitute a guarantee of future earnings or performance. CSHG does not guarantee the accuracy and completeness of the information and data or that they are free of errors and omissions. CSHG is not liable for errors, omissions, or the use of the information contained herein. This material may not be copied, reproduced, or distributed, wholly or in part, without the express consent of CSHG. This message is for information purposes only and must not be copied, reproduced, or distributed without the express consent of Credit Suisse Hedging-Griffo. Credit Suisse Hedging-Griffo is not liable for any valuation errors or omissions. Investors should make their own investment decisions. Client Services (toll-free in Brazil): 0800 558777 | [www.cshg.com.br/contato](http://www.cshg.com.br/contato) Ombudsman office (toll-free in Brazil): 0800 77 20 100 | [www.cshg.com.br/ouvidoria](http://www.cshg.com.br/ouvidoria)

**Bahrain:** This material is distributed by Credit Suisse AG, Bahrain Branch, authorized and regulated by the Central Bank of Bahrain (CBB) as an Investment Business Firm Category 2. Related financial services or products are only made available to professional clients and Accredited Investors, as defined by the CBB, and are not intended for any other persons. The Central Bank of Bahrain has not reviewed, nor has it approved, this document or the marketing of any investment vehicle referred to herein in the Kingdom of Bahrain and is not responsible for the performance of any such investment vehicle. Credit Suisse AG, Foreign Branch, a branch of Credit Suisse AG, Zurich/Switzerland, is located at Level 21, East Tower, Bahrain World Trade Centre, Manama, Kingdom of Bahrain.

**Lebanon:** In Lebanon, this material is distributed by Credit Suisse (Lebanon) Finance SAL ("CSLF"), a financial institution incorporated in Lebanon, regulated by the Central Bank of Lebanon ("CBL") and having financial institution license number 42. Credit Suisse (Lebanon) Finance SAL is subject to the CBL laws and circulars as well as the laws and regulations of the Capital Markets Authority of Lebanon ("CMA"). CSLF is a subsidiary of Credit Suisse AG and part of the Credit Suisse Group (CS). The CMA does not accept any responsibility for the content of the information included in this material, including the accuracy or completeness of such information. The liability for the content of this material lies with the issuer, its directors and other persons, such as experts, whose opinions are included in the document with their consent. The CMA has also not assessed the suitability of the investment for any particular investor or type of investor. It is hereby expressly understood and acknowledged that investments in financial markets may involve a high degree of complexity and risk of loss in value and may not be suitable to all investors. The suitability assessment performed by CSLF with respect to this investment will be undertaken based on information that the investor would have provided to CSLF as at the date of such assessment and in accordance with Credit Suisse internal policies and processes. It is understood that the English language will be used in all communication and documentation provided by CS and/or CSLF. By accepting to invest in the product, the investor expressly and irrevocably confirms that he fully understands, and has no objection to the use of, the English language. This material is provided to you solely for informational purposes, is intended for your use only as you may deem appropriate, and does not constitute an offer or commitment, a solicitation of an offer or commitment, or any advice or personal recommendation, by any member of the CS Group of companies to enter into or conclude any transaction (whether on the indicative terms shown or otherwise). This material has been prepared by CS based on assumptions and parameters determined by it in good faith. The assumptions and parameters used are not the only ones that might reasonably have been selected and therefore no guarantee is given as to the accuracy, completeness or reasonableness of any such quotations, or disclosures. A variety of other or additional assumptions or parameters, or other market factors, indicators changes and other considerations, could result in different contemporaneous good faith analyses or assessment of the subject matter of this material. Past performance should not be taken as an indication or guarantee or guide of future performance, and no representation or warranty, express or implied, is made by any member of the CS Group of companies regarding future performance. The information set forth above has been

obtained from or based upon sources believed by CS to be reliable, but neither CS nor any member of the CS Group of companies, including CSLF, represent or warrant its accuracy or completeness. This material does not purport to contain all of the information that an interested party may desire or require. In all cases, interested parties should conduct their own investigation and analysis of the transaction(s) subject matter of this material and of the data set forth in it. Each person receiving this material should make an independent assessment of the merits and risks of pursuing a transaction described therein and should consult his own professional financial, legal and tax advisors, and may not in any way whatsoever be released from exercising his/her own judgment. The information and opinions contained in this document were produced as per the date stated thereon and may be subject to change without prior notification. If there is no express written indication to the contrary, please consider all figures provided to be unaudited. Only the provisions, conditions, restrictions and risk warnings contained in the client's current agreement with CS are legally binding. Neither CS, nor CSLF, accepts liability for any loss or damage arising from the use of this document nor from the risks inherent to financial markets. Investment products may involve a high degree of complexity and risk, or may be subject to stock market fluctuations (including losses) and consequently to fluctuations (including loss) in value, price and income, resulting in the investor not getting back the initial amount invested. In connection with the provision of services, CS and CSLF may receive fees, commissions, reimbursements, discounts or other monetary or non-monetary benefits which will form an additional part of CS's and CSLF's compensation set forth for the relevant service. Part of the capital invested may be used to pay any of these amounts. In receiving payments by third parties, Credit Suisse and/or CSLF's interests may be adverse to those of their clients. Detailed information on remunerations and/or potential or actual conflicts of interests will be disclosed to the relevant client and managed appropriately, in accordance with CMA Regulations and CS Internal policies and procedures. This document is not intended for persons who, due to their nationality or place of residence or any other reason, are not permitted to receive such information under local law. The same applies in any other jurisdiction except where compliant with the applicable laws. This document may not be reproduced in part or in full without the prior written consent of Credit Suisse.

**Qatar:** This information has been distributed by Credit Suisse (Qatar) L.L.C., which is duly authorized and regulated by the Qatar Financial Centre Regulatory Authority (QFCRA) under QFC License No. 00005. All related financial products or services will only be available to Eligible Counterparties (as defined by the QFCRA) or Business Customers (as defined by the QFCRA), including individuals, who have opted to be classified as a Business Customer, with net assets in excess of QR 4 million, and who have sufficient financial knowledge, experience and understanding to participate in such products and/or services. Therefore this information must not be delivered to, or relied on by, any other type of individual.

Warning: Past performance is not a reliable guide to future performance. These figures are estimates only. They are not a reliable guide to the future performance of this investment.

**Saudi Arabia:** This document is being distributed by Credit Suisse Saudi Arabia (CR Number 1010228645, NUN Number 7001515373), duly licensed and regulated by the Saudi Arabian Capital Market Authority pursuant to License Number 08104-37 dated 23/03/1429H corresponding to 21/03/2008AD. Credit Suisse Saudi Arabia's principal place of business is at King Fahad Road, Hay Al Mhamadiya, 12361-6858 Riyadh, Saudi Arabia. Website: [www.credit-suisse.sa](http://www.credit-suisse.sa)

**México:** This document represents the vision of the person who provides his/her services to C. Suisse Asesoría México, S.A. de C.V. ("C. Suisse Asesoría") and/or Banco Credit Suisse (México), S.A., Institución de Banca Múltiple, Grupo Financiero Credit Suisse (México) ("Banco CS") so that both C. Suisse Asesoría and Banco CS reserve the right to change their mind at any time not assuming any liability in this regard. This document is distributed for informational purposes only, and does not imply a recommendation or suggestion, nor the invitation to celebrate any operation and does not replace the communication you have with your executive in relation to C. Suisse Asesoría and/or Banco CS prior to taking any investment decision. C. Suisse Asesoría and/or Banco CS does not assume any responsibility for investment decisions based on information contained in the document sent, as the same may not take into account the context of the investment strategy and objectives of particular clients. Prospectus, brochures, investment regimes of investment funds, annual reports or periodic financial information contain all additional useful information for investors. These documents can be obtained free of charge directly from issuers, operators of investment funds, in the Internet page of the stock exchange in which they are listed or through its executive in C. Suisse Asesoría and/or Banco CS. Past performance and the various scenarios of existing markets do not guarantee present or future yields. The data on the performance of products do not consider commissions and fees related to issuance or amortization of values. There is no guarantee that the performance will reach or exceed the reference indexes or rates of products. In the event that the information contained in this document is incomplete, incorrect or unclear, please contact your Executive of C. Suisse Asesoría and/or Banco CS as soon as possible. It is possible that this document may suffer modifications without any responsibility for C. Suisse Asesoría and/or Banco CS. This document is distributed for informational purposes only and is not a substitute for the Operations Reports and/or Account Statements you receive from C. Suisse Asesoría and/or Banco CS in terms of the General Provisions Applicable to Financial

Institutions and other Legal Entities that Provide Investment Services issued by the Mexican Banking and Securities Commission ("CNBV"). Given the nature of this document, C. Suisse Asesoría and/or Banco CS does not assume any responsibility derived from the information contained therein. This document is intended for the exclusive use of the addressee and is not directed to the general public. Reproduction in whole or in part of the document sent without the prior written authorization of C. Suisse Asesoría and/or Banco CS is forbidden. Without prejudice to the fact that the information was obtained from or based on sources believed to be reliable by C. Suisse Asesoría and/or Banco CS, there is no guarantee that the information is either accurate or complete. Banco CS and/or C. Suisse Asesoría does not accept any liability arising from any loss arising from the use of the information contained in the document sent to you. Foreign currency investments involve additional risks. It is recommended that investor make sure that the information provided is in accordance to his/her personal circumstances and investment profile, in relation to any particular legal, regulatory or fiscal situation, or to obtain independent professional advice. In the case of Analysis Reports produced by Banco CS's analysis area, it is noted that this document represents the vision of the analyst or of the Analysis Area of Banco CS developed at that time and according to the circumstances of its elaboration, which did not receive any compensation from persons other than Banco CS, for which they work, or any entity of Grupo Financiero Credit Suisse (México), S.A. de C.V. These analysts reserve the right to change their opinion at any time not assuming any responsibility in that regard. Therefore, Banco CS y/o C. Suisse Asesoría and/or its affiliates assume no responsibility or liability in respect of the information contained in this document. In the case of documents containing information of markets or in the case of reporting of investments, please be aware that the document has been produced by the team of Investment Consulting of Banco CS, Private Banking, and it is not the result of an economic analysis or substantial investment, nor it comes from the department of Analysis, nor does it constitute a recommendation or Report of Analysis in terms of the General Provisions Applicable to Financial Institutions and other Legal Entities that Provide Investment Services issued by the Mexican Banking and Securities Commission ("CNBV"). Please be aware that such documents may contain a condensed version of Analysis Reports or the Global Analysis of Private Banking. The information and opinions expressed herein were produced in the date of their preparation and distribution and may be modified without prior notice. In the event that the document sent to you by C. Suisse Asesoría and/or Banco CS contains some extract of public information relating to any public offering of the securities market, be aware that the entire document may be consulted in its complete version, updated and valid in the Internet page of the Mexican Stock Exchange ("BMV"), [www.bmv.com.mx](http://www.bmv.com.mx). Any query can and should be done in that page in a holistic manner. The information in such document shall supersede and replace the information contained in the document sent to you. Any investor or interested person shall review and read in a comprehensive manner that version updated on the page in question. The document sent to you does not constitute or form part of a public offer for subscription and payment to a public offering, which may only be carried out through the process established in the applicable legal framework. C. Suisse Asesoría México, S.A. de C.V. is an investment adviser created in accordance with the Mexican Securities Market Law ("LMV"), registered with the Mexican Banking and Securities Commission ("CNBV") under the folio number 30070. C. Suisse Asesoría México, S.A. de C.V. is not part of Grupo Financiero Credit Suisse (México), S.A. de C.V., or any other financial group in Mexico. C. Suisse Asesoría México, S.A. de C.V. is not an independent investment adviser as provided by LMV and other applicable regulations due to its direct relationship with Credit Suisse AG, a foreign financial institution, and its indirect relationship with the entities that make up Grupo Financiero Credit Suisse (México), S.A. de C.V.

**Spain:** In Spain, this marketing material is distributed by Credit Suisse AG, Sucursal en España, legal entity registered at Comisión Nacional del Mercado de Valores.

**UNITED STATES: NEITHER THIS REPORT NOR ANY COPY THEREOF MAY BE SENT, TAKEN INTO OR DISTRIBUTED IN THE UNITED STATES OR TO ANY US PERSON (within the meaning of Regulation S under the US Securities Act of 1933, as amended).**

Copyright © 2021 Credit Suisse Group AG and/or its affiliates. All rights reserved.



[credit-suisse.com](https://www.credit-suisse.com)

© 2021, CREDIT SUISSE

